
NOBEL UNIVERSITY



POLICIES MANUAL

2024-2025

LOS ANGELES | BUENA PARK

This page is intentionally left blank.

Nobel University Policies Manual

July 1, 2024-June 30, 2025

Last revised in May 2024

Compiled and edited by Nobel University.

This manual is updated annually. Annual updates may be made by the use of supplements or inserts accompanying the manual. If changes in educational programs, educational services, procedures, or policies required to be included in the manual by statute or regulation are implemented before the issuance of the annually updated manual, those changes shall be reflected at the time they are made in supplements or inserts accompanying the manual.

This manual is available in print at both Nobel University locations. An electronic copy may be obtained by request or can be downloaded from the Nobel University website www.nobeluniversity.edu.

This publication is copyrighted by Nobel University and may not be reprinted or republished in whole or in part in any fashion or any media whatsoever without the prior written consent of a duly authorized Nobel University official.

For more information:

Los Angeles Main Campus
505 Shatto Place, Suite 300
Los Angeles, CA 90020
Tel: (213) 382-1136
Fax: (213) 382-1187
info@nobeluniversity.edu

Buena Park Branch Campus
6131 Orangethorpe Avenue, Suite 116
Buena Park, CA 90620
Tel: (714) 228-0307
Fax: (714) 228-0308
infobp@nobeluniversity.edu

www.nobeluniversity.edu

Table of Contents

PREFACE.....	3
✧ INTRODUCTION TO THE POLICIES MANUAL	3
INSTITUTIONAL INFORMATION	4
✧ HISTORY	4
✧ MISSION	4
✧ PURPOSE.....	4
✧ INSTITUTIONAL OBJECTIVES.....	4
✧ PROGRAMS OF STUDY	4
✧ CODE OF CONDUCT	5
✧ INSTITUTIONAL INTEGRITY POLICY	5
✧ BPPE.....	5
✧ ACCREDITATION	6
✧ AUTHORIZATION TO ENROLL INTERNATIONAL STUDENTS.....	6
✧ FACILITIES INFORMATION	6
SCHOOL POLICIES & PROCEDURES.....	7
✧ STATEMENT OF NON-DISCRIMINATION/EQUAL EMPLOYMENT OPPORTUNITY	7
✧ SEXUAL HARASSMENT.....	7
✧ FREEDOM OF SPEECH	8
✧ EMPLOYEE GRIEVANCE/COMPLAINT POLICY	8
✧ INSTRUCTIONAL USE OF COPYRIGHTED MATERIALS.....	9
ORGANIZATION & ADMINISTRATION	10
✧ EMPLOYMENT CATEGORIES.....	10
✧ JOB DESCRIPTION OF ADMINISTRATORS	11
✧ SUPERVISORY RESPONSIBILITIES	19
✧ RESPONSIBILITIES OF ADMINISTRATIVE STAFF	19
✧ EMPLOYEE CODE OF CONDUCT POLICY	20
NOBEL UNIVERSITY ORGANIZATION CHART	22
ACADEMIC POLICIES.....	23
✧ ADMISSION PROCESS.....	23
✧ DEFINITION OF A CREDIT HOUR	23
✧ TRANSFER CREDIT POLICY	23
✧ ATTENDANCE POLICY	24
✧ GRADING SYSTEM	24

✧ ABILITY-TO-BENEFIT	26
STUDENT SERVICES POLICIES	27
✧ STUDENT RIGHTS	27
✧ 1974 PRIVACY ACT	27
✧ FREEDOM OF ACCESS	28
✧ AMERICANS WITH DISABILITIES ACT (ADA) POLICIES	28
✧ STUDENT CODE OF CONDUCT	28
✧ ACADEMIC DISHONESTY	29
✧ DRUG, ALCOHOL AND SMOKING POLICIES	30
✧ WEAPONS POLICY	30
✧ GRIEVANCE POLICY	31
FINANCIAL POLICIES	32
✧ REFUND POLICY	32
✧ BUDGET POLICY AND PROCEDURE	33
✧ QUARTERLY FINANCIAL REPORT	33
✧ INVESTMENT	33
✧ DEFAULT	34
FACILITIES AND EQUIPMENT POLICIES	35
✧ SECURITY AND SAFETY	35
✧ HOUSING POLICY	36
✧ ACCESS TO EQUIPMENT AND MATERIALS	36
✧ EMERGENCY AND CRISIS INTERVENTION PLAN.....	36
BOARD POLICIES	37
✧ MEETING PATTERN.....	37
✧ CONFLICT OF INTEREST POLICY	37
✧ INVESTMENT POLICY.....	37
PERSONNEL GUIDELINES.....	39
✧ EMPLOYMENT PROCEDURES: ADMINISTRATION.....	39
✧ HOURS OF WORK.....	39
✧ ATTENDANCE AND PUNCTUALITY	39
✧ MEETING ATTENDANCE.....	40
✧ JOB ABANDONMENT	40
✧ MEALS AND REST BREAKS.....	40
✧ PERSONAL APPEARANCE.....	40
✧ PROFESSIONAL DEVELOPMENT.....	40
✧ WORKING CONDITIONS.....	41

❖ PERFORMANCE EVALUATION	41
❖ SALARIES AND BENEFITS	41
❖ PAYDAYS.....	41
❖ PROMOTION & TRANSFER	42
❖ PRIVACY OF PERSONNEL RECORDS	42
❖ PERSONAL RECORD CHANGES.....	42
❖ EMPLOYMENT AT WILL	42
❖ CONFLICT OF INTEREST.....	42
❖ SALES AND SOLICITATION.....	43
❖ RULES OF CONDUCT & DISCIPLINE.....	43
❖ TERMINATION OF EMPLOYMENT	45
BENEFITS.....	47
❖ HOLIDAYS	47
❖ VACATION.....	47
❖ TUITION BENEFIT FOR EMPLOYEES.....	47
LEAVES OF ABSENCE.....	49
❖ HEALTHY WORKPLACE HEALTHY FAMILY ACT OF 2014	49
❖ SICK LEAVES	49
❖ FAMILY MEDICAL LEAVE ACT.....	50
❖ PREGNANCY DISABILITY LEAVE.....	52
❖ BEREAVEMENT LEAVE.....	53
❖ PERSONAL LEAVE OF ABSENCE	53
❖ JURY & COURT DUTY.....	54
❖ VOTING TIME OFF	54
❖ CRIME VICTIM LEAVE.....	54
❖ EDUCATIONAL LEAVES.....	55
SECURITY & SAFETY.....	56
❖ JOB RELATED INJURIES AND ACCIDENTS.....	56
❖ DRUG, ALCOHOL AND SMOKING POLICIES	56
❖ WEAPONS POLICY	56
❖ SAFETY POLICY	56
❖ SECURITY INSPECTION & PRIVACY	57
DISCLAIMER	58

PREFACE

INTRODUCTION TO THE POLICIES MANUAL

This manual is intended as a general summary of rights, responsibilities, benefits and information for employees of Nobel University. The provisions of the policies contained in this manual, and any other similar written policy or document developed or disseminated by the School, are designed and intended to provide guidance and information. This manual was prepared in accordance with the School's current policies and applicable state and federal laws. This manual is not intended to substitute, replace, overrule, or modify any existing federal and state laws, agency rules, regulations or policies, nor be inclusive of every policy.

No provision of this manual, or any other policy or like document developed or disseminated by Nobel University, creates an employment contract, binding agreement, agreement to continue your employment, or any other obligation on the part of the School in regards to employment.

Employees are responsible for reading and understanding this manual and for abiding by the School's policies and procedures. The final interpretation of the provisions contained in this manual and in other similar written policies or documents developed or disseminated by the School is the exclusive responsibility of the management of the School.

If you have any questions regarding this manual, please contact the Chief Operating Officer.

INSTITUTIONAL INFORMATION

HISTORY

Nobel University's main campus was founded in the summer of 2000 in Los Angeles, California. Committed to producing quality practitioners of Oriental Medicine, the School began by offering the Master of Science in Oriental Medicine program (MSOM).

In 2003, the Bureau for Private Postsecondary Education approved the School to offer a certificate program in English as a Second Language (ESL), and in 2004 it was approved to offer the Bachelor of Arts in Business Administration (BBA) and Master of Business Administration (MBA) programs. In 2006, the School added the Bachelor of Arts in Church Music program (BCM). In 2009, a branch campus of the School was established in Buena Park, California to accommodate the growing student body.

In 2013, Nobel University shifted its strategic plan and its focus by concentrating exclusively on its business program offerings. Since Nobel University no longer provides the Certificate in English as a Second Language, Bachelor of Arts in Church Music, and Master of Science in Oriental Medicine programs, the School is able to specialize in the business education and deliver world-class education to its students.

MISSION

The mission of Nobel University is to advance responsible business practice through pragmatic education that is entrepreneurial in nature, Christian in focus, and global in orientation.

PURPOSE

Nobel University seeks to create a Christian learning environment in which the educational needs of all undergraduate and graduate students are met through preparation for careers in business-related fields and occupations.

INSTITUTIONAL OBJECTIVES

In support of the mission statement, Nobel University has developed four objectives. By the completion of the degree program, students will be able to:

1. Demonstrate the most contemporary theories, principles, and concepts in its business program offerings.
2. Demonstrate cultural awareness and tolerance through the intellectual and social development.
3. Demonstrate a sense of professionalism, including values, ethics, and the necessary judgment to function effectively in their chosen business field.
4. Demonstrating biblical and ethical standards in personal life and career

PROGRAMS OF STUDY

Nobel University offers the Bachelor of Arts in Business Administration and Master of Business Administration programs to prepare students for entry-level, and junior to senior level business positions, respectively, in the

business community.

CODE OF CONDUCT

In support of Nobel University's central functions as an institution of higher learning, a major responsibility of the administration is to protect and encourage the faculty in its teaching, learning, research, and public service. The authority to discipline faculty members in appropriate cases derives from the shared recognition by the faculty and the administration that the purpose of discipline is to preserve conditions hospitable to these pursuits. Such conditions, as they relate to the faculty, include, for example:

1. Free inquiry, and exchange of ideas;
2. The right to present controversial material relevant to a course of instruction;
3. Enjoyment of constitutionally protected freedom of expression;
4. Freedom to address any matter of institutional policy or action when acting as a member of the faculty whether or not as a member of an agency of institutional governance;
5. Participation in the operation of the School;
6. The right to be judged by one's colleagues, in accordance with fair procedures and due process, in matters of promotion, tenure, and discipline, solely on the basis of the faculty members' professional qualifications and professional conduct.

INSTITUTIONAL INTEGRITY POLICY

Nobel University is committed to integrity as a central element of our mission and values. NU's daily operations are conducted with honesty and transparency, which are also reflected in the way the institution represents itself to students, the public, and other organizations with which it partners. All members of our university are expected to abide by ethical and professional standards at all times. NU further abides by federal and state laws and other regulations, as well as policies set by the university and board. At NU, we all share responsibility for preserving this value, in order to promote an environment of integrity within our community.

BPPE

Nobel University is a private institution that is approved to operate by the Bureau for Private Postsecondary Education (BPPE) in California.

Los Angeles Main Campus School Code: 1942091- approved since July 19, 2002

Buena Park Branch Campus School Code: 73078785 - approved since August 09, 2011

Approval to operate means the institution is compliant with the minimum standards contained in the California Private Postsecondary Education Act of 2009 (as amended) and Division 7.5 of Title 5 of the California Code of Regulations.

Any questions regarding the above approvals may be directed to the Bureau for Private Postsecondary Education at: 2535 Capitol Oaks Drive, Suite 400, Sacramento, CA 95833; www.bppe.ca.gov; Toll-free Telephone Number (888) 370-7589 Fax (916) 263-1897.

ACCREDITATION

Nobel University is a member of the Transnational Association of Christian Colleges and Schools (TRACS) [15935 Forest Road, Forest, VA 24551; Telephone: 434.525.9539; e-mail: info@tracs.org], having been awarded Accredited Status as a Category III institution by the TRACS Accreditation Commission on April 25, 2023. TRACS is recognized by the United States Department of Education (ED), the Council for Higher Education Accreditation (CHEA), and the International Network for Quality Assurance Agencies in Higher Education (INQAAHE).

AUTHORIZATION TO ENROLL INTERNATIONAL STUDENTS

Nobel University is authorized under Federal law to enroll nonimmigrant alien students.

Los Angeles Main Campus: SEVIS School Code LOS214F01183000

Buena Park Branch Campus: SEVIS School Code LOS214F01183001

FACILITIES INFORMATION

Los Angeles Main Campus:

505 Shatto Place, Suite 300
Los Angeles, CA 90020
Phone: (213) 382-1136
Fax: (213) 382-1187

Buena Park Branch Campus:

6131 Orangethorpe Avenue, Suite 116
Buena Park, CA 90620
Phone: (714) 228-0307
Fax: (714) 228-0308

Nobel University's Main Campus is conveniently located near the 101, 110, and 10 freeways west of Downtown Los Angeles. This campus occupies approximately 11,700 square feet of classrooms, a library, and office space. The Buena Park Branch Campus is conveniently located near the 5 and 91 freeways. It is close to various shops, restaurants, and residential areas. This campus occupies approximately 6,400 square feet of classrooms, a library, and office space. Both facilities are located close to residential communities where ample housing is available. All classes are held in these two locations.

The building, equipment, and other learning resources being used for instructional purposes fully comply with all applicable federal and state regulations, and local ordinances for safety and public health.

SCHOOL POLICIES & PROCEDURES

STATEMENT OF NON-DISCRIMINATION/EQUAL EMPLOYMENT OPPORTUNITY

Nobel University does not discriminate on the basis of race, color, national or ethnic origin, religion, age, sex, pregnancy, disability, or prior military service in administration of its educational policies, admission, employment, educational programs, or activities. The School's executive officers are responsible for the coordination of nondiscrimination efforts and the investigation of employee and student complaints.

The laws and regulations prohibiting such acts of discrimination are (1) Title VI and VII of the Civil Rights Acts of 1964, 29 CFR 1601-1607; (2) Equal Pay Act of 1963, 29 CFR Part 800; (3) Title IX of the Education Amendments of 1972, 45 CFR Part 86; (4) Age Discrimination in Employment Act of 1967, 29 CFR Part 850; (5) Sections 503 and 504 of the Rehabilitation Act of 1973, 45 CFR Part 84 and 41 CFR Part 741; (6) Section 402 of the Vietnam Era Veterans' Readjustment Assistance Act of 1974, 41 CFR Part 60-250; and (7) the Americans with Disabilities Act of 1990.

SEXUAL HARASSMENT

Consistent with the School's policy on equal employment opportunity, harassment in the workplace based on a person's race, color, sex, religion, national origin, age, disability, or any other protected class, will not be tolerated concerning employees or applicants for employment. Nobel University is committed to preventing and promptly correcting such harassing behavior.

Harassment of any form is condemned in the workplace, and the School recognizes its duty to provide employees with a harassment free environment in which to work. The following describes the type of conduct that is prohibited as well as the complaint provisions to investigate and remedy any problems that may arise. Each complaint of such conduct will be given swift and serious attention and will be thoroughly investigated. There will be no reprisals taken against any employee for making allegations or inquiries concerning harassment.

Sexual harassment can also be any activity, which creates a hostile or offensive working environment for members of one sex -- whether such activity is carried out by a supervisor or a coworker. It is also sexual harassment for a supervisor to take disciplinary action against or deny a promotion to an employee because he or she rejected sexual advances. Behavior that constitutes sexual harassment includes but is not limited to the following: unwelcome sexual advances, requests for sexual favors, sexual exploitation, gestures or other forms of communication of a sexual nature considered inappropriate to the employment setting of the School. In addition, actions, words, jokes or comments based upon an individual's race, ethnicity, age, religion, disability, or any other legally protected class, is harassment.

Sexual harassment of students, staff, or faculty is strictly prohibited by law and by School regulations. Sexual harassment is unacceptable and will not be tolerated on campus. The campus community will take all necessary and appropriate steps to protect students, staff, and faculty from sexual harassment and all forms of sexual intimidation and exploitation. Complaint procedures for employee complaints are available in the office of the Chief Operating Officer. The School staff and faculty may receive informal counseling and formal assistance by contacting the Chief Operating Officer. The School encourages students, staff and faculty to become aware of and to take responsibility for their own security.

It is the obligation of all employees to cooperate fully in any investigation process. Disciplinary action may be taken against any employee who is uncooperative or who attempts to discourage or prevent an employee from

using the School's complaint procedure to report unlawful harassment. Retaliation by the School employee against any individual who makes a complaint of unlawful harassment is strictly prohibited. Similarly, any person who participates or cooperates in any manner in an investigation or any other aspect of the process described herein shall not be retaliated against. Retaliation is itself a violation of this policy and is a serious offense. Complaints regarding allegations of reprisal should be immediately brought to the attention of the Chief Operating Officer.

Discipline that the School may impose on employees for behavior that violates this policy and other unprofessional conduct by the School employee may include, but is not limited to, reprimand, suspension, demotion or dismissal. Unlawful harassment by non-employees may result in restricting the harasser's access to all School offices and operating units.

In addition to the School's internal complaint procedure, employees may also contact the Equal Employment Opportunity Commission (EEOC) or the California Department of Fair Employment and Housing (DFEH) to report unlawful harassment.

FREEDOM OF SPEECH

Nobel University firmly believes in the individual's right to expression, so long as such expression does not infringe upon or suppress the rights of other individuals. Article 1, Section 2(a) of the California Constitution, states that every person may freely speak, write, and publish his or her sentiments on all subjects. Communications involving hate violence, sexual and/or racial discrimination, and "fight words" are not protected by the law. The School shall uphold and enforce these rights and should any person's actions violate the rights of another individual, such person shall be subject to disciplinary action.

EMPLOYEE GRIEVANCE/COMPLAINT POLICY

It is important that employees are treated fairly and receive prompt responses to problems and concerns. For this reason, the School provides grievance procedure to promote prompt and responsible resolution of issues raised by faculty and administrators. This procedure may be used freely without fear of retaliation, and the Chief Operating Officer is available to assist throughout the procedure. The process outlined below should be used if an individual disagrees with a supervisor's action including any disciplinary action. If the problem involves discriminatory harassment, sexual harassment and/or discrimination, reference to those policies should be made to initiate a complaint. When unsure which policy applies, contact should be made with the Chief Operating Officer for assistance.

Step 1. Discuss complaint with immediate supervisor.

The School encourages informal resolution of complaints. Employees should first discuss the complaint with their immediate supervisor within three (3) business days of the situation whenever possible. If the complaint is not resolved as a result of this discussion or such a discussion is not appropriate under the circumstances, should prepare the Employee Complaint Procedure Form and submit it to the immediate supervisor within five (5) business days of the discussion, or proceed to Step Two.

Step 2. Prepare and submit Employee Complaint Procedure Form to second-level supervisor for review.

If the employee feels the complaint was not resolved in discussions with his/her immediate supervisor, they may prepare and submit a formal written complaint for review by the person to whom the employee's immediate supervisor reports ("second-level supervisor"). To do so, the employee should prepare the Employee Complaint Procedure Form and submit it to the second-level supervisor within seven (7) business days of the Step One discussion with the immediate supervisor (or within seven (7) days of the event being grieved if Step One is bypassed). The second-level supervisor will then review the

complaint, send a copy to the immediate supervisor (if appropriate), and schedule a meeting for the employee to discuss the complaint. The meeting will ordinarily be held within five (5) business days of the second-level supervisor's receipt of the Employee Complaint Procedure Form. The second-level supervisor will issue a written decision, generally within five (5) business days of the meeting. If the complaint is not resolved to the employee's satisfaction, proceed to Step Three.

Step 3. Submit Complaint Procedure Form for Final Appeal to third-level supervisor.

If the employee is not satisfied with the Step Two decision, they may submit the complaint to whom the employee's second-level supervisor reports ("third-level supervisor"). The third-level supervisor with administrative responsibility will issue a written decision within seven (7) business days of receipt of the Step Two decision. The third-level supervisor will provide the School's final written response, generally within fourteen (14) business days.

INSTRUCTIONAL USE OF COPYRIGHTED MATERIALS

Nobel University recognizes that accomplishment of its mission may be facilitated by the use of works owned or created by others. It is the policy of the School that students, employees, and other individuals who use School facilities and/or equipment, and students, employees, and other individuals who use off-campus non-School facilities and/or equipment in connection with School activities or on behalf of the School, shall recognize those accomplishments by respecting the intellectual property of others and using such works only to the extent such use would be permitted by law. For example, this policy applies when photocopying is undertaken at all central copying centers, machines in the library, or on any other reproduction equipment owned or leased by the School or used in connection with School activities or on behalf of the School.

Students, employees, and other individuals subject to this policy who use material originated by others shall not, as a matter of policy, when using such materials, infringe on those rights of the originator which are protected by copyright laws and shall secure permission to use or reproduce copyrighted works when such permission would be required under copyright law and/or pay royalties when such payment would be required. Students, employees, and other individuals subject to this policy are expected to obtain permission from the copyright owners unless the intended use is clearly permitted under the doctrine of "fair use." Students, employees, and other individuals subject to this policy are expected to be selective and sparing in copying. "Fair use" shall not be abused. The School does not condone copying instead of purchasing copyrighted works where such copying would constitute copyright infringement. For purposes of this policy copyrighted material means any work or intellectual property which may be subject to copyright under the laws of the United States. This includes, but is not limited to, literary works, including computer programs and compilations; musical works, including any accompanying words; dramatic works, including any accompanying music; pantomimes and choreographic works; pictorial, graphic, and sculptural works; motion pictures and other audiovisual works; and sound recordings. For example, this policy applies to photocopying for classroom use, use of computer software, use of videocassettes, and off-air videotaping.

This policy is not intended to waive any rights, remedies, immunities, or defenses available to the School in the event of an infringement or alleged reserved.

ORGANIZATION & ADMINISTRATION

It is intended of Nobel University to clarify the definitions of employment classifications so that you may understand your employment status and benefit eligibilities.

EMPLOYMENT CATEGORIES

EXECUTIVE OFFICERS

Employees in this group are officers of the institution, defined as Chief Executive Officer/President, Chief Academic Officer, and Chief Operating Officer.

ADMINISTRATIVE PROFESSIONALS

Employees in this group provide administrative, supervisory, and/or professional support directly or indirectly to executive officers.

SUPPORT STAFF

Employees in this group provide administrative support. Positions include clerical/secretarial, receptionist, and service/maintenance support for the educational and administrative functions of the School.

FACULTY (PROFESSORS/INSTRUCTORS)

These employees are those holding degrees from accredited colleges and universities. They are paid, at will, on a semester to semester basis. They are expected to complete all tasks in the job description for faculty members and are not paid for hours other than those in the classroom.

FULL-TIME

Employees in this group include executive officers, administrative professionals and support staff. Anyone employed at least forty (40) hours a week is considered full time. A full-time employee is eligible for all employee benefits including health insurance, paid holidays, paid vacations, paid sick leave, etc.

PART-TIME

Employees in this group include administrative professional and support staff (clerical/secretarial and service/maintenance) employees. Anyone employed for less than forty (40) hours a week and is paid on an hourly basis is considered part-time. A part-time employee is not eligible for any employee benefits.

TEMPORARY

Temporary staff employees are those who are hired as interim replacements, to temporarily supplement the work force, or to assist in the completion of a specific project. Employment assignments in this category are of a limited duration. Employment beyond any initially stated period does not in any way imply a change in employment status. Temporary employees retain that status unless and until notification of a change is received in writing by the Chief Operating Officer.

INDEPENDENT CONTRACTORS

Independent contractors *are not employees*. Independent contractors are not covered by workers' compensation insurance. Individuals desiring an independent contractor status must consult the Chief Operating Officer to whom they will provide services prior to any work being commenced and/or authorized. All independent contractors will be required to complete the necessary forms required by the School. Independent contractors are ineligible for any and all benefits provided to employees. In the event Nobel University desires the services of the individual independent contractor status, the School will grant an employee status to the individual in accordance with the above defined categories at the time such services are authorized.

JOB DESCRIPTION OF ADMINISTRATORS

DUTIES OF THE CHIEF EXECUTIVE OFFICER/PRESIDENT

The President serves as the Chief Executive Officer (CEO) of Nobel University and is responsible for the success of Nobel University. In collaboration with the Institutional Advisory Board, the CEO assures the School's relevance in the community, the fulfillment of the School's mission and vision, and the accountability of this institution to its students and the diverse constituents which it serves.

The CEO delegates responsibility for management and day-to-day operations to the Chief Academic Officer and Chief Operating Officer, and has the authority to carry out these responsibilities, in accordance with the direction and policies established by the institution. The CEO is responsible for providing strategic leadership for the institution by working with other executive officers and suggestions from the Institutional Advisory Board to establish long-range goals, strategies, plans, and policies. The CEO is also responsible for establishing organizational objectives and priorities and for reviewing and evaluating the progress for the attainment of these objectives and performance goals.

Duties and Responsibilities

- a) Communicates with professionals and consultants regarding legal, financial, and other matters pertaining to the corporation.
- b) Approves contracts between the company and schools and other agencies.
- c) Keeps corporation in compliance with laws affecting personnel, licensing, name registration, etc.
- d) Provides general direction to define and articulate Nobel University's values, mission, vision, and short and long-term goals and to develop strategies for achieving those goals;
- e) Actively promotes the institution's mission with the public, students, school districts, and regulatory and governmental organizations.
- f) Acts as the final authority in the human resources of the organization according to authorized personnel policies and procedures that fully conform to current laws and regulations.
- g) Reviews and approves the fiscal activities of the organization including budgeting, reporting and audit.
- h) Facilitates the integration of the school into the fabric of the community by using effective marketing and communications activities.
- i) Acts as an advocate, within the public and private sectors, for issues relevant to the school, its academic programs, services and constituencies.

DUTIES OF THE CHIEF ACADEMIC OFFICER

The Chief Academic Officer (CAO) reports directly to the President. The CAO maintains regular communication

among the Program Advisory Committee, Department Chairs, Faculty, and the Librarian. The CAO is responsible for providing leadership, supervision, guidance, and direction of the department chairs, faculty, and librarian. The CAO is responsible for the overall administration of the academic programs to be consistent with the school's mission and vision, and to assure academic excellence. The CAO assures delivery of high quality instruction and services to meet the needs of students, business and industry, and the community. If the CAO holds an academic position at the school in addition to administrative duties, the teaching appointment must be limited to no more than three (3) courses in any given semester.

Duties and Responsibilities

1. Academic Programs and Services

- a) Provides leadership, guidance, and motivation to ensure that departments design, develop, evaluate, and deliver a comprehensive array of instructional programs and services which fulfill the institutional goals;
- b) Provides leadership for development, review, and implementation of school policies, procedures, and operational activities related to academic areas;
- c) Provides leadership, supervision, and guidance to department chairs for planning, developing, implementing, and evaluating educational programs and services to support the school mission and support the school strategic plan;
- d) Provides leadership for handling campus emergencies, resolving student issues and complaints in a timely manner, and communicating and interpreting Nobel University's policies and procedures;
- e) Develops and encourages active participation of academic advisory committees;
- f) Assures the quality and effectiveness of all academic programs, offerings, and services through systematic review and evaluation of curricula and instruction using appropriate evaluations and assessments, benchmarking, institutional accreditation;
- g) Provides guidance and supervision of faculty, ensuring ongoing relevant professional development and regular evaluation;
- h) Plans and oversees all aspects of the graduation ceremonies;
- i) Prepares and assures approval of textbook selections;
- j) Supervises the preparation and maintenance of files or websites that contain current syllabi and academic programs, policies, and procedures;
- k) Assures all publications and websites related to academic programs are accurate, current and relevant;

2. Organization and Planning

- a) Develops and oversees class schedules and classroom, and facilities utilization and coordinates programs and services with other campus personnel;
- b) Assists in the planning for new facilities and integrating up-to-date instructional equipment and technology in instruction;
- c) Provides input in strategic planning by establishing annual and multi-year operational goals designed to implement the strategic goals of Nobel University and the CEO/President;
- d) Formulates and enforces School academic policies.

3. Budget

- a) Assists in the preparation and implementation of the annual budget for all academic departments;
- b) Approves reimbursement of professional development activities;
- c) Assists in library material acquisitions.

4. Scheduling

- a) Prepares the academic calendar, class schedules, and the final exam schedule;
- b) Monitors class schedules and assists department chairs to plan and forecast course offerings based on changes in student enrollment;
- c) Promotes the efficient use of instructional space, classrooms, and libraries.

5. Faculty

- a) Calls and conducts faculty meetings and maintains committee minutes;
- b) Coordinates, offers, and documents professional development and training for academic faculty;
- c) Coordinates faculty selection and recommendations for changes in faculty status;
- d) Validates and documents full-time and adjunct faculty credentials.

DUTIES OF THE CHIEF OPERATING OFFICER

As the principal aide to the President, handles a wide range of matters of institutional importance on behalf of the President, and oversees all operations of the Office of the President, to include management of staff, budgets, administration, policies, and procedures. Provides coordination and oversight in the development of defined core initiatives for the Office of the President. Serves as the President's primary strategic liaison with School and community constituencies. Plan, direct, or coordinate operational activities at the highest level of management with the help of presidents, other executive staff and department managers.

Duties and Responsibilities

- a) Serves as principal aide to the President; supports the President in dealing with a range of faculty, staff, student, and public affairs issues; directly handles matters of institutional importance on behalf of the President, as appropriate.
- b) Determines and formulates policies and provide overall direction of school within guidelines set up by the President
- c) Designs, establishes, and maintains an organizational structure and staffing to effectively accomplish the organization's goals and objectives; overseas recruitment, training, supervision, and evaluation of unit staff.
- d) Serves as the President's primary liaison with School, government, and/or community leadership on strategic and operational matters pertaining to the specific area of institutional interest
- e) Provides integrated policy analysis and strategic consultation to the President and administration on major issues affecting the School.
- f) Interacts with School, industry, government, and community officials and stakeholders in the representation and development of strategic program initiatives.
- g) Prepares and/or contributes to the preparation of reports, briefings, presentations, and responses on institutional and strategic issues, as appropriate.
- h) Oversees all facets of the daily operations of the organizational unit, ensuring compliance with all relevant laws, regulations, policies, and operating agreements.
- i) Researches policies to see what changes could be advantageous and which trends might negatively impact the school in the future.

BRANCH CAMPUS DIRECTOR

Under the direction of the Chief Operating Officer, the Branch Campus Director serves as the person in-charge and oversees all operation of the branch campus. The Branch Campus Director provides the leadership and management necessary to ensure that the branch campus has the proper operational controls, administrative and reporting procedures, and faculty and staff systems in place to effectively grow each campus and to ensure financial strength and operating efficiency.

The Branch Campus Director oversees all operations, supervises administrative staff to ensure that the campus stays on track to reach the School's mission and objectives under the direction and guideline of the Chief Operating Officer (COO) of the School.

The Branch Campus Director reports human resource activities, such as determining staff requirements, interviewing, hiring and training new employees to the COO. The Branch Campus Director reviews and recommends necessary changes in policies, and recommends the needs of the School to the COO.

Duties and Responsibilities

- a) Works closely with the COO to implement plans for the operational infrastructure of each campus;
- b) Remains knowledgeable of the local market and industry trends, local competitors, and all other aspects of the branch campus that may affect its degree programs and reports this information to the COO to assist in developing corporate strategy;
- c) Manages, measures, and reports the effectiveness of all operating processes internal and external, to the COO and/or CEO;
- d) Trains professional staff and evaluates performance and recommends merit increases, promotion, and disciplinary actions to the COO and/or CEO;
- e) Analyzes and recommends changes in each campus' organizational systems, policies and procedures, and ensures their implementation on a day-to-day basis;
- f) Ensures that all activities and operations of each campus are performed in compliance with local, state, and federal regulations and laws governing business operations.
- g) Develops and maintains the institutional effectiveness plan.

DUTIES OF THE ADMINISTRATOR OF ADMISSIONS

The Administrator of Admissions is responsible for recruiting students, evaluating potential students and admitting students to ensure a high achieving and diverse student body. This individual serves as the point of contact for interested students who seek more information about what the school has to offer. The Administrator of Admissions ensures that the School follows procedures and policies regarding admissions testing, transcript review, applications processing, and correspondence with students. The Administrator of Admissions also works with Nobel University's Registrar and Administrator of Finance by assisting with enrollment, as well as financial and attendance issues.

Duties and Responsibilities

- a) Serves as primary contact for the prospective students, student body, and other audiences requesting admissions information about Nobel University;
- b) Directs and coordinates the admissions recruitment, outreach, and application review;
- c) Plans, coordinates, and supervises the admissions, records, and registration procedures of Nobel University's degree programs and courses in accordance with state, federal, and institutional regulations;
- d) Coordinates and implements registration and enrollment policies and procedures in consultation with other student services offices and directs the activities of the Registrar engaged in transcribing and evaluating academic records of students applying for admission to Nobel University;
- e) Oversees the handling of official records submitted by students applying for admission to the School and ensures that all records are filed and stored properly and securely;
- f) Oversees language proficiency examination;
- g) Verifies and notifies students of admissions and academic eligibility, and issues official documents and letters including, but not limited to, acceptance letters, verification of enrollment, failure to register, etc.;
- h) Assists with the development, implementation, monitoring, and revision of policies and procedures relating to the admissions.

DUTIES OF THE REGISTRAR

The Registrar facilitates effective student registration and enrollment at the School and maintains student data files. The Registrar has responsibility in gathering, recording, maintaining, and reporting student records within local, state and federal guidelines. The Registrar coordinates the processes for the articulation of transfer credits, enrollment and degree verification, graduation and certification of the School degree programs, processing and production of diplomas, and manages commencement lists and ceremonies. This also includes ensuring that all requirements have been met prior to graduation and that diplomas are factually correct. The Registrar also oversees aspects of academic record keeping, student grading, attendance, and management of student and teaching faculty databases. This individual ensures the integrity, accuracy, and security of all records of current and former students and maintains and processes requests for academic documentation on up-to-date course schedules, catalogs, final examination schedules, grade sheets, attendance rosters, progress reports, and official transcripts.

Duties and Responsibilities

- a) Administers academic policies related to degree requirements of major programs of study at Nobel University;
- b) Coordinates Nobel University's registration activities, facilitates student registration and enrollment procedures;
- c) Administers pre- and post-tests to measure student learning outcomes;
- d) Maintains class attendance records;
- e) Maintains official academic records of Nobel University, and ensures security and integrity of student records in accordance with Nobel University's policies;
- f) Analyzes statistical data on registration and enrollment for administrative use in formulating policies;
- g) Evaluates students' progress toward completion of degree or program of study and certifies completion of degree requirements;
- h) Processes requests for official transcripts;
- i) Coordinates with the Chief Academic Officer regarding transfer student transcripts and eligibility;
- j) Directs compilation of information, such as class schedules and graduation requirements, for school publications;
- k) Coordinates class schedules with room assignments for optimum use of buildings and equipment and may assign rooms for student activities.

DUTIES OF THE CHIEF FINANCE OFFICER

The Chief Finance Officer oversees the overall student financial services such as invoicing and tuition receivables and develops the School's annual budget with the COO in conjunction with the external accountant. The Chief Finance Officer is entrusted with the School's financial matters and is responsible for developing and implementing financial policies and systems that track and record the School's expenditures and revenues. In addition, the Chief Finance Officer communicates with students and administrators regarding the status of student accounts. Other duties include maintaining student financial records, issuing receipts, issuing refund checks, and reconciling invoicing and billing issues.

Duties and Responsibilities

- a) Receives registration fee and tuition payments, and issues receipts;
- b) Accounts for all income and prepares deposits for crediting to proper bank accounts;
- c) Develops and maintains sound working relationships with banks and other financial institutions in accordance with local and state statutes and institutional policies;

- d) Maintains, manages, and verifies bank account transactions;
- e) Manages the set up and maintenance of computerized accounting records and student financial services;
- f) Maintains student financial records of payments and contacts students with information and options concerning tuition payment deadlines, balances, and adjustments;
- g) Resolves student billing issues;
- h) Develop annual budget with CEO/President;
- i) Maintains the fixed asset inventory.

DUTIES OF THE ADMINISTRATOR OF STUDENT SERVICES

The Administrator of Student Services provides students counseling on personal or academic problems, employment opportunities, student orientations, and extracurricular activities. The Administrator of Student Services is also responsible for creating and maintaining a safe, healthy, and supportive environment and culture that synthesizes the intellectual, physical and social development of Nobel University's students in a holistic way.

Duties and Responsibilities

- a) Manages and provides student learning environment and development opportunities;
- b) Helps establish a student culture where diversity is encouraged and where students learn to respect differences, take responsibility for their actions, and exercise leadership;
- c) Works with the student groups and other members of the School in developing extracurricular programming assuring integration with the academic life of the institution and encouraging student personal growth and development;
- d) Develops and coordinates policies and procedures relative to all student activities;
- e) Serves as primary contact for the student body, including prospective students and other audiences requesting information about student life and other student services at Nobel University;
- f) Supervises and provides guidance as the Nobel University Student Association plans activities;
- g) Provides career services that include, but are not limited to, instruction and counseling to students in career development issues, implementation of job seeking skills workshops, expansion of resources for employment opportunities, and employment assistance to international students such as Optional Practical Training (OPT);
- h) Oversees the maintenance of all records and statistics on job placement and ensures that resources are properly allocated to achieve graduate job placement goals across all programs;
- i) Invites and coordinates with guest speakers from the local business community;
- j) Maintains effective relationships with local community agencies or employers to provide students with the opportunity to explore volunteer experiences;
- k) Performs student orientation;
- l) Monitors graduation rates;
- m) Conducts and monitors student satisfaction surveys, graduate satisfaction surveys, and employer satisfaction surveys.

DUTIES OF THE LIBRARIAN

The Librarian, in collaboration with the Chief Academic Officer and Teaching Faculty/Professor/Instructor is responsible for adequate provision of library resources and information services, appropriate to the academic level and scope of an institution's programs, is essential to teaching and learning. This individual is also responsible for overseeing the library facility, materials, service and operations on the Nobel University campus.

Duties and Responsibilities

- a) Serves as the chairperson of the Library Committee;
- b) Evaluates library resources and information services on a regular basis;
- c) Processes library materials used by Nobel University students and faculty;
- d) Provides training to students and faculty to better utilize library resources as an integral part of the learning process;
- e) Develops library policies and procedures;
- f) Inputs data needed for computer circulation and catalog system and keeps records of circulation and materials;
- g) Compiles lists of books, periodicals, articles, and audiovisual materials on particular subjects;
- h) Develops and indexes databases that provide information for library users;
- i) Evaluates materials to determine outdated or unused items to be discarded;
- j) Helps maintain the appearance and functionality of the library by organizing collections of books, publications, documents, audiovisual aids, and other reference materials for convenient access;
- k) Maintains library supplies and equipment;
- l) Oversees the computer systems in the library.

DUTIES OF THE LIBRARY ASSISTANT

The Library Assistant, under the guidance of the Librarian, is responsible for performing routine clerical duties within the library and assisting the library users with the technical, circulation, and reference functions of the library.

Duties and Responsibilities

- a) Processes library materials used by Nobel University students and faculty;
- b) Assists library users in locating and using library materials, equipment and services;
- c) Assists library users with basic reference work as time and training permits;
- d) Sorts books, publications, and other items according to established procedure and returns them to shelves, files, or other designated storage areas;
- e) Inputs data needed for computer circulation and catalog system and keeps records of circulation and materials;
- f) Assists the Librarian in the preparation of book displays;
- g) Provides assistance to the Librarian in the maintenance of library supplies and equipment;
- h) Performs additional tasks as assigned by the Librarian.

DUTIES OF THE ADMINISTRATIVE ASSISTANT

The Administrative Assistant performs a variety of administrative and/or clerical support activities for the Administrators and the Executive Officers of the School.

Duties and Responsibilities

- a) Screens phone calls, faxes and visitors, directing to appropriate staff or department;
- b) Composes correspondence to students, faculty, staff, and the public concerning school information;
- c) Manages in organization and maintenance of office supplies;

- d) Assists in collection of admissions documents and organization of student files;
- e) Assists with the preparation of reports, agendas, and other supporting documents;
- f) Maintains contact with students regarding registration related matters and assists in maintaining student database.

DUTIES OF THE PROGRAM DIRECTOR

The Program Director holds the authority and responsibility for all administrative functions and supervision within the program and serves as a liaison among students, the faculty, and other administrators. This individual serves at the will of the President and reports directly to the Chief Academic Officer. A Program Director is responsible for organizing and supervising the courses of instruction offered by the program, distributing the teaching and research load to the Teaching Faculty, and caring for the equipment and facilities assigned to or in the custody of the program. As the leader of the program, the Director must be a role model for collegiality, collaboration across the organization, integrity, scholarship, and professional competence. The Director generates and communicates to the Nobel's Chief Academic Officer all recommendations for hiring, retention, promotion, tenure, evaluation, sabbatical leave, or discipline of faculty. The Director is also responsible for educational program for all students at Nobel University and coordinates and evaluates academic advising of students of the program.

Duties and Responsibilities

- a) Helps develop and implement Nobel University's strategic plan, especially within their program and serves as the Chief Academic Officer's representative in the daily operation of the program;
- b) Reviews, approves, and files course syllabi of the program;
- c) Reviews and approves any special course requirements of the program;
- d) Develops current and accurate Nobel catalog descriptions of the program;
- e) Assesses and maintains physical facilities of the program, including equipment, supplies, and space; Reports to the appropriate Nobel official, maintenance or service required when necessary;
- f) Coordinates and communicates to the appropriate Nobel officer(s) any accreditation, program review, or assessment(s) required of the program;
- g) Conducts annual performance reviews of faculty and staff and makes merit recommendations to the Chief Academic Officer in accordance with Nobel University's policy;
- h) Represents the program to internal and external academic communities, alumni, business and industry, government, foundations, and the general community;
- i) Enforces Nobel University's policies and procedures.

DUTIES OF THE FACULTY

The fundamental responsibility of a faculty member is teaching. Teaching responsibilities include preparation time, time spent in the classroom, laboratory, or telecommunications, conferring with students on course materials; directing papers, projects and theses; directing individual and group studies; reviewing written examinations and papers; evaluating presentations; and supervising independent study projects.

In addition to teaching, the responsibilities for this position include curriculum development in the form of updating syllabi, administrative responsibilities pertaining to the teaching assignment(s), attending faculty and other meetings, and providing some services to the Nobel and the community as needed.

For faculty to remain viable, they need follow a path of professional development which may include furthering one's formal education; attending seminars, workshops, and other professional meetings; and in general by staying abreast of their field of specialization as well as teaching skills and methodology.

Faculty members are expected to serve in a collegial fashion and in accordance with professional and ethical principles when dealing with other faculty members, students, administrators, and members of the public.

Duties and Responsibilities

- a) Prepares and delivers lectures, seminars, group activities as well as other forms of instruction that facilitate learning on topics central to their assigned course;
- b) Plans, evaluates, and revises curricula, course content, and course materials and methods of instruction; Selects and obtains materials and supplies such as textbooks;
- c) Prepares course materials such as syllabi, homework assignments, and handouts;
- d) Compiles bibliographies of specialized materials for outside reading assignments;
- e) Compiles, administers, and grades examinations, and evaluates and grades students' class work, assignments, and papers;
- f) Keeps abreast of developments in the field by reading current literature, talking with colleagues, and participating in professional organizations and conferences;
- g) Initiates, facilitates, stimulates, and moderates classroom discussions;
- h) Maintains regularly scheduled office hours to advise and assist students; Performs related duties such as advising students on academic and vocational curricula;
- i) Maintains student attendance records, grades, and other required records.

SUPERVISORY RESPONSIBILITIES

In order for Nobel University to operate efficiently, it is essential that supervisors carry out their delegated responsibilities in accordance with the organization's mission, goals, and objectives. It is the responsibility of an effective supervisor to:

1. Assign and review work; ensure the proper completion of day-to-day work in his or her area of responsibility.
2. Ensure appropriate on-the-job training and employee orientation.
3. Actively promote equal opportunity and affirmative action.
4. Promote safe work practices and conditions.
5. Establish standards and expectations for work performance.
6. Advise and counsel employees regarding their performance.
7. Serve as the primary resource for employees, as well as assist with their work-related problems, whenever appropriate.

Almost any action taken concerning employees begins with the recommendation of the supervisor. The responsibilities listed above cover the essential part of a supervisor's duties but are not intended to be complete.

RESPONSIBILITIES OF ADMINISTRATIVE STAFF

Nobel University seeks to attract and retain capable and motivated individuals who recognize the need to meet certain basic responsibilities. These responsibilities include, but are not limited to, those listed below. Some or all of these responsibilities may seem like common sense to anyone, but they are listed to prevent any misunderstanding between the School and its staff members. These responsibilities are:

1. To perform each task quickly, safely, and well.

2. To be at work when scheduled, fulfilling the regular work hours/day.
3. To notify the supervisor no later than your normal starting time if you are unable, for any reason, to report as scheduled.
4. To use work hours for work related activities only.
5. To cooperate with reasonable requests from co-workers.
6. To respect the confidentiality of sensitive information.
7. To keep all school and office related matters undisclosed to people unaffiliated with Nobel University.
8. To respect the rights of others.
9. To respect the property of others and Nobel University and to use the School's property only for legitimate work purposes, unless specific authorization has been received by the executive officers of Nobel University.

EMPLOYEE CODE OF CONDUCT POLICY

Nobel University promotes honesty and integrity as values and foundational beliefs. NU works to earn the trust of the public, its students, and its employees. In order to fulfill this task, all employees must perform their duties to the highest degree of professionalism, honesty, ethical conduct, and all ways that honor the Christian faith. Therefore, all NU employees should avoid situations that would be considered fraudulent, wasteful, or abusive of the School assets. NU expects all employees to behave with all honesty and exercise biblical, ethical judgment in all of their duties.

Responsibility for Detection and Prevention

1. The administration and all employees have the responsibility to be aware of activities that are wasteful and abusive within their department and to establish regulations to prevent them.
2. If fraud is suspected, the administrator, supervisor, or employee shall cooperate in full with all authorities investigating the activity. If fraud is discovered, appropriate actions shall be taken.

Discipline and Restitution

1. Employees found in violation of this policy may be subject to any disciplinary action, which may include termination. The severity of the discipline imposed will depend on the violation and circumstances. If appropriate, NU will report any activity in violation of local, state, or federal law to the appropriate authorities.
2. NU may seek restitution from individuals or parties if the fraud, waste, or abuse involves a financial loss to the school.

Definitions

1. *Fraud*: An intentional act to deceive, steal, or cheat, usually for the purpose of causing a detriment to another and/or bringing about some benefit to oneself or others.
2. *Waste*: An act resulting in the spending, consumption, mismanagement, and use or squandering of institutional assets or resources to the detriment or potential detriment of the school. Waste may also result from incurring unnecessary expenses due to inefficient or ineffective practices.
3. *Abuse*: behavior that is lacking or improper and does not align with the biblical principles that are promoted by Nobel. It includes the misuse of authority or position for personal financial interest.

Investigation

1. If an allegation of fraud, waste, or abuse is reported, the Chief Operating Officer will begin an approach to resolving the concern. The Chief Operating Officer will investigate and coordinate with the appropriate people needed to carry out an accurate investigation. This may include legal counsel, financial professionals, and other experts.
2. The investigation may include interviewing colleagues, reviewing activities of the employee in question, and examining all paper and electronic documents. This includes checking all school computers including email, offices, and/or other work areas.
3. The Chief Operating Officer may, in consultation with the school's legal counsel, recommend the suspension of the employee during the investigation.

President's Decision

1. Upon completion of the investigation, the Chief Operating Officer will prepare a written report. This report will be shared with any person needed for consultation in order to determine appropriate discipline.
2. If the investigation determines that fraud, waste, or abuse has occurred, the report will include a recommendation of disciplinary action discussed. It may also include suggestions to help prevent future fraud. The report will be submitted to the President within five (5) calendar days after the investigation has ended. The President will review the report and may make modifications. The President holds the final decision.

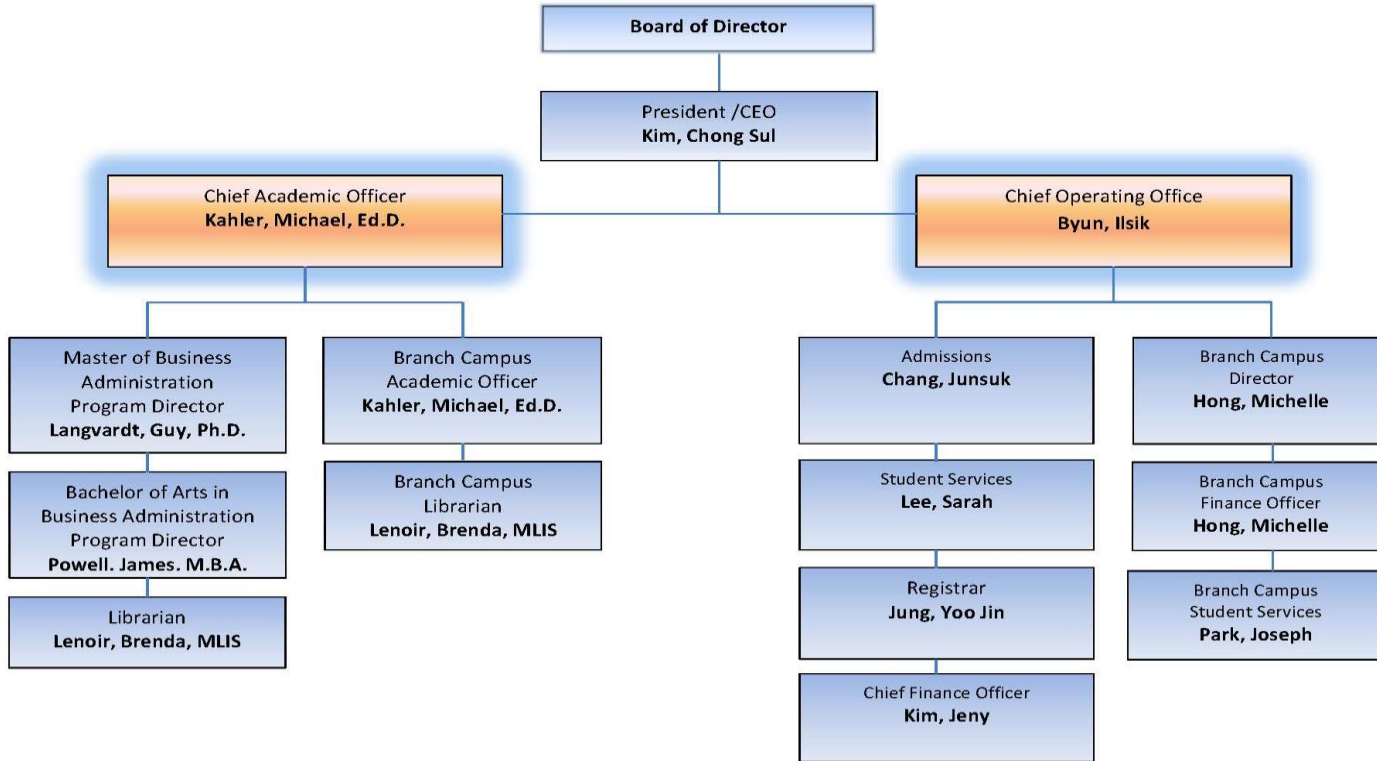
NOBEL UNIVERSITY ORGANIZATION CHART



Los Angeles Main Campus
 505 Shatto Place, Suite 300
 Los Angeles, CA 90020
 Tel: 213.382.1136 Fax: 213.382.1187
 Website: www.nobeluniversity.edu

Buena Park Branch Campus
 6131 Orangethorpe Avenue, Suite 116
 Buena Park, CA 90620
 Tel: 714.228.0307 Fax: 714.228.0308
 Website: www.nobeluniversity.edu

Organizational Chart



ACADEMIC POLICIES

ADMISSION PROCESS

Applications for admission are taken year-round. Application forms are available online and from the Admission's Office.

Prior to signing the enrollment agreement, we encourage you to review the school catalog and School Performance Fact Sheet. These documents contain important policies and performance data for this institution. This institution is required to have you sign and date the information included in the School Performance Fact Sheet relating to completion rates, placement rates, license examination passage rates, and salaries or wages, and the most recent three-year cohort default rate, if applicable, prior to signing this agreement.

Prospective students must contact the School to obtain an application packet. The packet will contain the required application and forms needed for submission. The student must contact all relevant institutions for submission of proof of graduation attesting to their academic qualifications from undergraduate institutions for admission to the graduate program or submission of proof of high school completion for admission to the undergraduate programs. It is also the student's responsibility to ensure that all documents and forms are complete. Admissions decisions will be made within 30 days of receiving all required documentation. Students will not be admitted to the School without the required documentation and application/registration fee. If an applicant does not accept their admission or fails to matriculate within one year of acceptance, the applicant will need to go through the admissions process again. This means that the applicant must resubmit a non-refundable application/registration fee, application, documents, forms and information required for admission to their selected program. Previous admission does not guarantee readmission.

DEFINITION OF A CREDIT HOUR

Nobel University academic work is established by semester credit hours. One (1) semester credit hour earned is defined as the satisfactory completion of: at least fifteen (15) clock hours of didactic work (lecture hours); or at least thirty (30) clock hours of laboratory or supervised work; or at least forty-five (45) clock hours of practicum, as determined by the University. One (1) clock hour equals a minimum instruction time of fifty (50) minutes of supervised or directed instruction and appropriate break(s).

TRANSFER CREDIT POLICY

Nobel University welcomes the transfer of course work from accredited institutions. Institutions include those that have been accredited by an agency that is recognized by the United States Department of Education. Outside the U.S., a provincial or national authority such as the Ministry of Education usually approves some institutions.

Credit is evaluated on a course-by-course basis, requiring that course descriptions and credit values be comparable. Only work earned with a grade of "C" or higher is transferable to the undergraduate program and "B" or higher to the graduate program; however, grades from transfer credits do not compute into Grade Point Averages (GPA). Grade Point Averages are computed solely on courses completed at Nobel University. Under exceptional circumstances and with the approval of the Chief Academic Officer, transfer of credit may be

possible from unaccredited institutions. In addition, Nobel University takes steps to ensure that course work taken at the previous institution is comparable to the course work offered by Nobel University. These steps include one or more of the following:

- Demonstration of achievement by means of comprehensive examinations;
- Review of syllabi, grading standards, and other relevant learning resources at the sending institution; and
- Analysis of historic experience regarding the success of transfers from the sending institution.

If a student wishes to apply transfer credit to his/her program, the transfer should be arranged after receiving a letter of acceptance. In order to request this transfer, a student should submit a Transfer Credit Approval Form and arrange for an official transcript (signed and sealed) to be mailed directly from the previous institution to Nobel University's Registrar's Office.

ATTENDANCE POLICY

CLASSROOM ATTENDANCE

All work missed due to absence or lateness must be made up to the satisfaction of the faculty in order to receive credit for the course. Faculty may, at their own discretion, arrange for make-up examinations, in cases of excused absence. Unexcused absence or lateness for an examination will normally result in a failing grade for that examination.

Excessive absence is defined as absences in excess of 20% of scheduled classroom hours in didactic courses. Faculty will report excessive absences to the Department Chairs. Students may be asked to appear before the Department Chairs and the faculty. Failure to appear at the meeting may result in a failing grade, and may also result in academic probation.

If the excessive absences are not classified as excused, the Department Chairs may:

1. Place students on probation, giving provisions for return to good standing.
2. Suspend students for the remainder of the class meetings with no penalty grade assigned. Any tuition to be refunded will be refunded per Nobel University Refund Policy.
3. Suspend students for the remainder of the class meetings with a failing grade assigned.
4. Recommend to the Chief Academic Officer that students be dismissed from the School.

TARDINESS

Tardiness is a distraction to a good learning environment and is discouraged. Faculty may reduce final grades based on excessive tardiness.

GRADING SYSTEM

All student learning is graded on a letter basis. Any student receiving an "incomplete" grade will be given up to sixteen weeks to complete the assignment. Any student receiving a "D" grade or below is responsible for creating a plan for improving his/her grade with his/her faculty. Student performance is evaluated by examinations, attendance, classroom participation, special projects, seminars, research works, etc. The School uses the traditional scale grading system for all examinations and final grades.

GRADE PROGRESS

Grade	Grade Point (Remarks)
A	4.00
A-	3.75
B+	3.25
B	3.00
B-	2.75
C+	2.25
C	2.00
C-	1.75
D+	1.25
D	1.00
D-	0.75
F	0.00
P*	0.0 (Pass)
NP*	0.0 (No Pass)
I*	0.0 (Incomplete)
W*	0.0 (Withdrawal)
R*	0.0 (Repeated Course)
IP*	0.0 (In Progress)

* These grades are not included in the calculation of the student's GPA.

* **Master programs:** D and F (Failed Courses) = 0 points

MBA program: Minimum Passing Grade is a C. Only those graduate level courses in which a student earns the equivalent of a 2.0 or better may be applied toward the total number of credits required for graduation.

UNITS OF CREDIT

Nobel University academic work is established by semester credit hours. One (1) semester credit hour equals forty-five (45) units comprised of the following academic activities:

One clock hour in a didactic learning environment = 2 units

One clock hour in a supervised laboratory setting of instruction = 1.5 units One clock hour of externship = 1 unit

One clock hour of out-of-class work and/or preparation for the didactic learning environment, or supervised laboratory setting of instruction that are designed to measure the student's achieved competency relative to the required subject matter objectives = 0.5 unit

One (1) clock hour equals a minimum instruction time of fifty (50) minutes of supervised or directed instruction and appropriate break(s).

PASS (P)

The grade of "P" is used to denote "Pass" when no letter grade is given. This grade is assigned to a grade of C or better for undergraduate and a grade of B or better for graduate students. The "P" grade is not included in the GPA.

NO PASS (NP)

The grade of “NP” is used to denote “No Pass” when no letter grade is given. The “NP” grade is not included in the calculation of the GPA.

INCOMPLETE GRADE (I)

The faculty may assign the “I” grade when work is of passing quality but is incomplete for good cause. Assigning an “I” is at the discretion of the faculty, who is not obligated to do so. If faculty issues a grade of “I,” the remaining coursework must be finished by the last day of the next semester (fall, summer, spring). If the course is not completed, the “I” will automatically lapse to an “F”. It is the student’s responsibility to discuss with the faculty the conditions and time frame for completing the course by the next term. The student is not to re-enroll in the course again unless the student receives an “F”. The grade of “Incomplete” will be marked on the transcript until the final grade is complete. However, it will not be calculated into the GPA. Once the completed grade is reported to the Registrar, the grade is posted and the final grade is averaged into the cumulative GPA.

WITHDRAWAL (W)

Students may withdraw from courses during the first two weeks after classes begin without affecting their grade point average. Students thereafter are required to obtain permit from the Department Chair to withdraw. Withdrawal from enrolled classes after the first two weeks with the proper withdrawal procedure will result in a “W” grade recorded in the official transcript. No withdrawals are permitted during the final three weeks of instruction except in cases such as accident or serious illness. A grade of “I” will be automatically entered in the grade report if the student does not attend the final three weeks of class without being excused. Withdrawal grades are not included in the GPA. A refund of tuition, if any, will be made in accordance with the Refund Policy.

International students on F-1 Visas should check with the Administrator of Student Services before withdrawing from a class which could potentially place them below full-time status or risk violating their legal status.

REPEATED COURSES (R)

Any undergraduate course in which a grade of C- or below or any graduate course in which a grade of B- or below earned can be repeated once. The second grade, for better or worse, is calculated into the cumulative and term grade point average (GPA).

Important Additional Restrictions

1. Students may repeat the same course only once.
2. Students may receive credit hours for a repeated course only once.
3. Undergraduate students will not receive credit for a course repeated after they have completed a more advanced course in the same sequence with a grade of C or better.
4. Graduate students will not receive credit for a course repeated after they have completed a more advanced course in the same sequence with a grade of B or better.

It is the recommendation of the School for students to consult with the Chief Academic Officer if they have any questions about repeating courses.

ABILITY-TO-BENEFIT

Nobel University does not admit Ability-to-Benefit Students.

STUDENT SERVICES POLICIES

STUDENT RIGHTS

Nobel University maintains fair and reasonable practices in all matters affecting students: the delivery of educational programs, provision of support services, and timely resolution of disciplinary matters, as well as the handling of grievances.

The following statements of rights and responsibilities are not viewed as a final accomplishment of a completed institution, but rather as themes of a direction for a growing and changing educational environment.

1. The students enjoy the same basic rights and are bound by the same responsibilities to respect the rights of others, as are all citizens. Nobel University considers individuals as students upon admission.
2. The student as a citizen has the rights to freedom of speech, freedom of the press, freedom of peaceful assembly and association, freedom of political beliefs and freedom from personal force and violence, threats of violence and personal abuse.
3. The student as a citizen has a right to be considered equally for admission to, employment by and promotion within the campus in accordance with the provisions against discrimination in the general law. Nobel University is no sanctuary from the general law; furthermore, the campus is a community of growth and fulfillment for all.
4. All students of Nobel University have other responsibilities and rights based on the nature of the educational process and requirements of the search for truth and its free presentation.

These rights and responsibilities include the following:

- a) Each student has the freedom, dependent on level of competence to teach, learn and conduct research and publish findings in the spirit of free inquiry.
- b) Each student has the right to pursue normal curricular and co-curricular activities, including freedom of movement.
5. Students of Nobel University have the right to expect that records maintained on them contain only information which is reasonably related to the educational purposes or to the health and safety of the individual or others. Furthermore, it is assumed that the student has the right to protection from unauthorized disclosure of confidential material contained in School records.
6. Students of Nobel University have the right to reasonable and impartially applied rules, designed to reflect the educational purposes of the institution and to protect the safety of the campus.
7. Students of Nobel University who hold opinions about basic policy matters of direct concern to them have the right to have them heard and considered at appropriate levels of the decision-making process. It should be noted that students who have a continuing association with the institution and who have substantial influence have an especially strong obligation to maintain an environment supportive of the rights of others.
8. The student has the responsibility to act in a manner that is conducive to learning by the student and by other students by: being prepared, prompt, attentive and courteous in all academic settings (including classrooms, laboratories, libraries, advising centers, departmental and faculty offices, etc.) and complying with requests made by a faculty or staff member in an academic setting.

1974 PRIVACY ACT

Nobel University complies with the Family Education Rights and Privacy Act of 1974 (also known as “Buckley Amendment”). Any questions about the availability of student records or the release of such records should be addressed to the Registrar’s Office.

A student's academic records, grades, and personal information, as in compliance with the 1974 Privacy Act (as known as Public Law 93-380, Section 438) may not be provided to third parties without his/her written consent. Permission must be given by the student in order for the information in his/her file to be used as reference checks for credit or employment evaluation by third parties, and the student must file with the School Registrar a declaration to this effect that will be kept in the student's file. The provision to release financial data or related information to authorized state and/or federal agencies is not a violation of the 1974 Privacy Act.

Legally, authorized officials of State or Federal agencies may have access to student records for audit or evaluation of educational programs.

FREEDOM OF ACCESS

Nobel University is open to all qualified applicants according to its published admissions policies and standards. Upon matriculation, each student has access to all Nobel University services and facilities to which he or she is qualified. Access will be denied to persons who are not Nobel University students.

AMERICANS WITH DISABILITIES ACT (ADA) POLICIES

Nobel University is available to assist members of the School with disabilities who self-disclose and request classroom accommodations. In order for the School to provide eligible disabled members with reasonable accommodations, it is required that an official request for services and appropriate documentation be submitted to the Chief Operating Officer.

STUDENT CODE OF CONDUCT

A student may be failed or dismissed for academic dishonesty. At the discretion of the executive officers, a student may be dismissed from Nobel University for behavior(s) disruptive to the educational mission of the School, including those stated below:

1. Cheating, bribery, or plagiarism in connection with an academic program.
2. Forgery, alteration or misuse of the School's documents, records or identification, or knowingly furnishing false information to the School.
3. Misrepresentation of oneself or of an organization to be an agent of the School.
4. Obstruction or disruption on or off campus property, of the campus educational process, administrative process, or other campus function.
5. Physical abuse, on or off campus property, of the person or property of any member of the School community, or members of his/her family or the threat of such physical abuse.
6. Theft of or non-accidental damage to the School's property or property in the possession of or owned by a member of the School community.
7. Unauthorized entry into, unauthorized use, or misuse of the School's property.
8. Sale of or knowing possession of dangerous drugs, restricted dangerous drugs, or narcotics, as those terms are used in California statutes, except when lawfully prescribed pursuant to medical or dental care, or when lawfully permitted for the purpose of research, instruction or analysis.
9. Lewd, indecent, or obscene behavior on the School's property or at any campus function.
10. Abusive behavior directed toward a member of the School community.
11. Violation of any order of the President of the School, notice of which has been given prior to such violation and during the academic term in which the violation occurs, either by publication or by posting on an

official bulletin board designed for this purpose, and which order is not inconsistent with any of the other provisions of this section.

12. Soliciting or assisting another to do any act that would subject a student to dismissal, suspension, or probation pursuant to this section.

The Executive Officers of the School, at their discretion, may place on probation, suspend or dismiss a student for one or more of the causes enumerated above. Any adjustment of fees or tuition shall be those required by law.

ACADEMIC DISHONESTY

Individual Faculty, in cases of academic dishonesty in class, may fail a student for that examination, activity or course. The faculty may refer the circumstance to the Department Chair for review and further action. The Chief Academic Officer may fail a student in a test, fail a student in a course, or expel a student for cheating or plagiarism. Cheating includes, but is not limited to, looking at another person's examination paper, using unauthorized notes in an exam, leaving the classroom during an exam and consulting notes or references.

PLAGIARISM POLICY AND CHEATING

Plagiarism Definition

Plagiarism is passing off someone else's ideas or words as your own without giving credit or without giving credit properly. Plagiarism may take the form of directly copying another's work (in whole or in part), improperly citing sources, or presenting another's view or concept without acknowledging the originator. Academic dishonesty also refers to cheating on quizzes or exams.

Procedure

First offenses will be handled at the department level. A faculty member who suspects a student of plagiarism will first meet with the student to discuss the problem. In the absence of any resolution, the student will meet with the Department Chair, and if a resolution still cannot be reached, then a meeting will be called with the Chief Academic Officer. Any instance of plagiarism that the faculty has decided to discipline with an "F" for the course will be reported along with appropriate documentation to the Department Chair and the Chief Academic Officer. A second offense will result in the possibility of dismissal from the School.

Penalties

Penalties for plagiarism and cheating may include but are not limited to the following:

1. Re-writing the assignment in question
2. Receiving an "F" on the assignment or test in question
3. Failing the course in which the assignment was submitted
4. Academic suspension
5. Dismissal from the School

COPYRIGHT POLICY

Copyright Law stimulates the development of creative works by protecting rights to that work, including the right to receive financial remuneration from the reproduction and distribution of that work. In general, Copyright Law

protects literary works, musical works, dramatic works, choreographic works, artistic works, audiovisual works, sound recordings, and software. Copyright Law gives the copyright owner the exclusive right to reproduce, distribute, modify, and publicly display the works.

Use of copyright materials by educators is governed by the statute itself, and by guidelines that have been developed to interpret the Fair Use exception that is set forth in the statute. The provisions for Library copying are found in Section 108 of the Copyright Law Title 17 of the United States Code.

1. There cannot be any material advantage resulting from making a copy and the copy must bear the notice that the materials copied have been copyrighted.
2. It is possible to reproduce a copy of a published work for the purpose of replacement of material that is damaged, deteriorating, lost or stolen if it has been owned by the Library and after a reasonable effort has been made to obtain a duplicate copy and if a replacement copy cannot be obtained at a fair price.
3. Copies can be made from items in a Library for a user at their request if not more than one article, or other parts of a copyrighted collection, periodical, or recording is involved provided that the copy becomes the property of the user and the copy will not be used for any purpose other than private study, scholarship or research.
4. The Library must prominently display, at the place where orders for copies are taken or copies are made, a warning of copyright infringement and that the use of the items copied must be only the use indicated above.
5. There shall be no liability for copyright infringement upon the institution or its employees for unsupervised use of various types of reproductive equipment located in its premises, provided that such equipment displays a notice that making such a copy shall be subject to copyright law.
6. The person making the copy for their use has the liability for determining whether or not use of the copy fits the criteria for Fair Use as described in Section 107 of the Copyright Law Title 17 of the United States Code.
7. The law specifically states that permission given in Section 108 of the Copyright Law Title 17 of the United States Code does not include any musical work, pictorial, graphic or sculptural work, motion pictures or other audiovisual works.

DRUG, ALCOHOL AND SMOKING POLICIES

Nobel University has a policy of maintaining a drug-free learning environment. All members of the School community, which include administration, faculty, staff students, and guests, abstain from the consumption/use of alcohol, narcotics, and/or misuse of prescription drugs while on School property and on any field trip sponsored as part of the instructional program. Violation of this policy could lead to suspension, expulsion, termination, and in the context of criminal activity, referral to law enforcement agencies. Employees and students having difficulties with addictive substances can seek confidential advising from the Office of Student Services for referrals to agencies providing assistance with alcohol or drug related problems. It is the School policy that smoking is prohibited in all School buildings. At the discretion of the administration, outside areas may be set aside on School property to accommodate students, staff members, and faculty who smoke. Violation of the smoking policy may result in suspension or termination of academic status or employment.

WEAPONS POLICY

The possession or use of firearms or other weapons on Nobel University premises by any employee, student, vendor, or other visitor is strictly prohibited. Any exception to this policy must be authorized in advance by the Chief Executive Officer/President.

GRIEVANCE POLICY

Students have a right to submit grievances and complaints any time they desire and to submit them to any member of Nobel University's administration or faculty. Students who have a complaint or grievances are encouraged to talk to a member of the School administration.

For grievances regarding grades, the procedure is as follows:

1. The student must address the complaint, dispute or grievance with the appropriate faculty no later than 3 weeks after grades are posted for a final grade or within 3 days after a student receives a grade for an exam, term paper or assignment. If the student is not satisfied with the faculty's resolution of their grade, the student has a right to submit a written request concerning the grade to the Chief Academic Officer.
2. The submission of a grievance concerning a grade must be in writing to the Chief Academic Officer. The Chief Academic Officer will review and investigate the grievance using their discretion to interview sources as needed. The Chief Academic Officer will notify the student within ten (10) days regarding the disposition of the grievance.
3. If the student is not satisfied, the student can request an interview with the Chief Academic Officer and the faculty within ten (10) days. Any decision resulting from this interview shall be deemed final.

For all other grievances, the procedure is as follows:

1. The student must file a written grievance with the Administrator of Student Services within ten (10) days of being notified of any action taken against the student. The Administrator of Student Services shall review and investigate the grievance and notify the student of a decision within ten (10) days.
2. If the student is not satisfied, the student can request and interview with the Administrator of Student Services and faculty/administrator of their choice within ten (10) days. Any decision resulting from this interview shall be deemed as final.
3. The student also has the right to file a grievance with the Bureau for Private and Postsecondary Education (BPPE).

A student or any member of the public may file a complaint about this institution with the Bureau for Private Postsecondary Education by calling (888) 370-7589 toll-free or by completing a complaint form, which can be obtained on the bureau's internet web site www.bppe.ca.gov.

Students may also file a complaint with the TRACS Accrediting Agency by completing the TRACS Complaint Form found on www.tracs.org/resources/ and submitting to:

President
Transnational Association of Christian Colleges and Schools
15935 Forest Road
Forest, VA 24551.

FINANCIAL POLICIES

REFUND POLICY

The institution shall have a refund policy for the return of unearned institutional charges if the student cancels an Enrollment Agreement or withdraws during a period of attendance. The refund policy for students who have completed sixty (60) percent or less of the period of attendance shall be a pro rata refund. Please refer to Hypothetical Refund Example below.

If any portion of your tuition was paid from the proceeds of a loan, then the refund will be sent to the lender or to the agency that guaranteed the loan, if any. Any remaining amount of refund will first be used to repay any student financial aid programs from which you received benefits, in proportion to the amount of the benefits received. Any remaining amount will be paid to you. If there is a balance due, you will be responsible to pay that amount.

If the student obtained a loan to pay for an educational program, the student has the responsibility to repay the full amount of the loan plus interest, less the amount of any refund.

If the student is eligible for a loan guaranteed by the federal or state government and the student defaults on the loan, both of the following may occur: 1) The federal or state government or a loan guarantee agency may take action against the student, including applying any income tax refund to which the person is entitled to reduce the balance owed on the loan; 2) The student may not be eligible for any other federal student financial aid at another institution or other government assistance until the loan is repaid.

If a student has received federal student financial aid funds, the student is entitled to a refund of moneys not paid from federal student financial aid program funds.

HYPOTHETICAL REFUND EXAMPLE

Assume that a student, upon enrollment, paid \$3,180 for tuition, \$50 for the Application Fee, \$30 for the Registration Fee, and withdraws after completing 24 hours of instruction. The pro rata refund to the student would be \$2782.56 based upon the calculations shown below.

\$3,260 Total Paid	Minus	\$50 Application Fee \$30 Registration Fee	= \$3,180
\$3,180	Divided by:	192 hours in the program	= \$16.56 Hourly Charge for the Program
\$16.56	Multiplied by:	24 hours of instruction attended	= \$397.44 Owed by the Student for Instruction Received
\$3,180	Minus	\$397.44	= \$2,782.56 Total Refund Amount

For the purpose of determining the amount a student owes for the time a student attended, a student shall be deemed to have withdrawn from the course when any of the following occurs:

1. A student notifies the school of your withdrawal or the actual date of withdrawal.
2. The school terminates a student's enrollment.
3. A student fails to attend classes for the three(3) week period. In this case, the date of withdrawal shall be deemed to be the last date of recorded attendance.

BUDGET POLICY AND PROCEDURE

The annual budgeting process begins the first week of September, when the Chief Finance Officer sends the Preliminary Budget Request Worksheets to all administrators who are authorized to manage Nobel University funds.

After Preliminary Budget Request Worksheets are due, the budget committee (President, Chief Operating Officer and Chief Finance Officer) will have about two weeks to develop NU's preliminary budget. The preliminary budget will include proposed allotments to each department requesting funds.

To develop the preliminary budget, these administrators will review prospective enrollment, revenue, key needs, major expenses and the total amount of funds requested through Preliminary Budget Request Worksheets. The total of funds for all departments cannot exceed 85% of the anticipated income from tuition, donations and other sources.

By October 15th, the Chief Finance Officer will send a Preliminary Budget Response Memo to each department that requested funds.

During mid-October, the budget committee will complete their final proposal for the upcoming year's budget. This budget will be submitted to the President (if the President delegated his or her authority and participation in this process) by the end of October. Unless the President requests further work on the budget, it will be submitted to the executive committee of the Board of Directors by November 1st. The Board will vote on this proposed budget at their stated meeting.

QUARTERLY FINANCIAL REPORT

It is a responsibility of the Budget Committee (President, Chief Operating Officer and Chief Finance Officer) to prepare the Quarterly Financial Report and present it to the Board of Directors. Once the quarterly financial statement is prepared by the external CPA, the Budget Committee will review and analyze the statement with the budget. If necessary, adjustments and updates will be made to the budget to reflect more accurate information. Any revisions to the budget must be reviewed and approved by the Board of Director. This process ensures financial stability which includes enrollment management, diversification of revenue, and realistic budget of the institution.

INVESTMENT

Considerations for the allocation of funds for any investment under the University account are first reviewed and discussed between the Chief Financial Officer and the President. If after thorough review, an investment is considered to assist and further the goals and mission of the university, a proposal will be created and submitted to the Board of Directors to be presented at the next board meeting. A review will then be completed by the Board. If approved by the Board, the Chief Operating Officer may then proceed with the investment with full authority to complete the transactions necessary. If not approved, the Board may decide to revisit the discussion on the potential investment at a later meeting or deny the investment.

Any board member who may have the appearance of a conflict of interest when making an investment decision for the university should be excused from discussing, contributing, or voting in that decision.

DEFAULT

A default by the university should trigger the following events:

- Potential students should be informed of the current financial situation of the University and that there is a possibility that they may not be able to complete their studies at the University.
- Current students who wish to transfer to a different university should be informed of the rights and limitations as transfer students.
- All survey and questionnaires regarding alumni should continue as normal.
- There should be no change to the retention policies and processes.
- Graduation rates should take into consideration and note the reasons for students not being able to graduate from the university.
- Student services should continue as normally as possible.

FACILITIES AND EQUIPMENT POLICIES

SECURITY AND SAFETY

The building in which the university is located is generally safe and secure. While this is generally true, all students must be aware of any unusual activity, which might put the community in danger. All unusual situations should be reported to the closest staff member or security personnel so that appropriate steps for safety can be taken.

Security Measures

The following security measures are in place to enhance safety while on the Nobel University premises:

- 1) All visitors must check in and out at the front desk;
- 2) Security cameras are installed on entry points and major traffic areas of the facility;
- 3) Unnecessary entry points to the facility will remain locked; and,
- 4) All entry points other than the main entrance will be locked during non-classroom hours.

Emergency Plan

- **Evacuation:** Used to move students and staff out of the building. With a simple evacuation, students and staff leave and move to a nearby pre-designated safe location and return to the school building right after the cause of evacuation is resolved. Schools practice evacuations regularly (often monthly), including fire drills.
- **Relocation:** Used to move students and staff to a pre-designated alternate site following evacuation when it is determined that returning to the school building will not take place within a reasonable period of time.
Depending on the time of day and the circumstances, students may be released early or put on hold until they are able to return to the school building. Plans should also be in place for students and staff with limited mobility who may need assistance moving to the relocation site.
- **Shelter-in-place:** Used during severe weather or other environmental threats (e.g., air contamination due to a local fire).
This is a precaution aimed to keep people safe while remaining indoors. (This is not the same thing as going to a shelter in case of a storm.) In schools, shelter-in-place involves having all students, staff, and visitors take shelter in pre-selected rooms that have phone access and stored disaster supplies kits and preferably access to a bathroom. The room doors are then shut.
- **Lockdown:** Used when there is a perceived danger inside the building.

A lockdown includes securing each occupied room by locking the door(s) and directing people to move away from windows and doors. Hallways are cleared of students and school staff. Typically, local law enforcement arrives to secure the site and arrange for evacuation or return to usual building activities. Students are kept in their classrooms or other secured areas in the school until the lockdown has ended.

- **Lockout:** Used to secure the building from a potential threat outside the building, such as when an unauthorized person is loitering on school grounds or when there is criminal activity in the neighborhood.

During a lockout, access to the building is restricted, but there may be some limited movement within the building.

HOUSING POLICY

Currently, Nobel University does not have any housing facilities under its control and does not provide any housing assistance. Students are responsible for their own housing arrangements. However, there are many apartment complexes within walking distance from both Nobel University facilities and an approximate range of cost as follows:

Los Angeles, California \$1,000 - \$1,450/month for one-bedroom apartment
Buena Park, California \$850 - \$1,250/month for one-bedroom apartment

ACCESS TO EQUIPMENT AND MATERIALS

Each classroom is furnished with appropriate equipment for instructional purposes such as student desks, an instructor's podium, and a desktop computer connected to a projector for in-class presentations. The library has a spacious facility with a collection of books, electronic resources, and audio and video materials designed for educational purposes. The library is equipped with a number of computer systems with LCD monitors, in order to support the students' and instructors' research activity. Horizon University Information Resources and technology makes the Internet available to the community. Students and instructors who have Ipads, laptop computers, or PC tablets in hand can have access to the internet anywhere on campus.

EMERGENCY AND CRISIS INTERVENTION PLAN

Nobel University is concerned about the health, safety, and well-being of all students, faculty members, and staff. First aid is available at the front desk of each campus. The School also provides insurance through an insurance company that covers liability throughout the facilities for bodily injury and property loss.

BOARD POLICIES

MEETING PATTERN

A regular meeting is summoned two times a year (May and November). All members should make attendance at the board meetings a high priority in their calendar. A chairman or majority of members should be able to have power to call special meetings.

The schedule for board meetings should be set two years in advance. The board will meet at least two times each year for a full day (including committee meetings).

CONFLICT OF INTEREST POLICY

The purpose of this conflict of interest policy is to protect this tax-exempt corporation's interest when it is contemplating entering into a transaction or arrangement that might benefit the private interest of an officer or director of the corporation or any "disqualified person" as defined in Section 4958(f)(1) of the Internal Revenue Code and as amplified by Section 53.4958-3 of the IRS Regulations and which might result in a possible "excess benefit transaction" as defined in Section 4958(c)(1)(A) of the Internal Revenue Code and as amplified by Section 53.4958 of the IRS Regulations. This policy is intended to supplement but not replace any applicable state and federal laws governing conflict of interest applicable to nonprofit and charitable organizations. The governing board obtains signed statements from each board member annually. By signing, the policy members agree to disclose potential and actual conflicts and act in accordance with the policy.

INVESTMENT POLICY

1. The Board of Directors will maintain responsibility for all investment matters of the corporation. It shall form a Finance Committee consisting of three or more members of the board who will be duly nominated and elected to such positions.
2. The board shall nominate and elect committee members that have significant knowledge and experience with regard to investing. The Finance Committee will propose and/or maintain policies and procedures that the full board will periodically review and revise, including investment policies for the corporation. Such policies and procedures must protect the interests of the corporation in the fulfillment of its non-profit and tax-exempt mission, purposes and objectives. These policies and procedures are also to be in accord with biblical principles.
3. Daily supervision of transactional and administrative paperwork pertaining to investments may be delegated either to a business manager or to the Finance Committee.
4. Investment policies shall be conservative, prioritizing safekeeping of principal. Aggressive growth funds that present higher risk shall be avoided. Normal growth funds may be suitable, in some cases, and any funds designed for growth shall be well diversified. The investment policies shall specify that a certain percentage of various accounts must be kept in bonds, CDs or other conservative investments. Three to six months of reserve capital shall be kept in a liquid account that is FDIC insured. No more than \$100,000 shall be kept in any one bank account, so as to remain below the limit of FDIC insurance.
5. Our specific policies for diversification of endowed funds are as follows:

The target balance of endowed funds is to be 60% equity at cost basis and 40% in fixed income and money market funds. No more than 5% of endowed funds will be invested in a single stock. Of the equity portion of funds, the equity manager will weigh the holdings to large cap and global equities. Of the fixed income portion of funds, bonds will be either corporate or government bonds rated B or better.

6. Our policies for ethical implications of investments are as follows:

Companies whose primary products are pornography, alcoholic, tobacco or gambling are not to be used in the portfolio.

7. Our policies for careful safeguarding of funds are as follows:

An independent, third party will hold endowed assets of financial instruments and submit monthly statements of accounts.

8. As a measure to prevent mistakes, fraud, embezzlement and conflicts of interest, two types of audits will be conducted. A qualified individual will conduct an outside, opinioned audit. Since the corporation's independent auditor will not review all financial transactions, the board will conduct a regular review of the expenses of high-level administrators.

PERSONNEL GUIDELINES

Like other institutions of higher learning and business enterprises, Nobel University has established and follows adequate compensation guidelines. The following apply to faculty, administration, and staff members:

1. The total resources of the School will be allocated to carry out the purpose and objectives of the institution, including a major portion of funds toward its compensation program.
2. The compensation program will be structured to enable the School to attract and retain the numbers and kinds of personnel to provide instruction and to operate the institution within its “labor market.”
3. The nature of the program and associated administrative time costs must be in reasonable proportion to other priorities demanding financial resources and available management time.
4. The program must gain personnel acceptance; that is, employees must understand -- the policies and practices and accept both their concepts and specific actions as being reasonable and impartially administered.
5. The compensation program must play a positive role in motivating all personnel to perform their work to the best of their abilities and in a manner which supports the achievement of the School’s objectives.
6. The program must provide opportunity for personnel at every position to achieve their reasonable aspirations in a framework of equity, impartiality, and reasonableness.

EMPLOYMENT PROCEDURES: ADMINISTRATION

The following procedure provides guidelines for supervisors in matters of employing administration personnel.

1. Initiation of Interview Process
 - a) When a vacancy occurs in an existing position or when a new position is created, interviewing of potential candidates to fill the position may be initiated, as appropriate, by the President and/or the Chief On-site Administrators of the School.
2. Structure of Interview Process
 - a) The following procedure will be followed in the interviewing and employment process: Screening of potential applicants may be assigned to any of the officers, and other faculty and/or staff may be asked to participate in the interview process at the discretion of the President or appropriate officer.

Once the candidate has been approved by the President and the Chief On-site Administrator, a meeting will be scheduled with the new employee. The meeting includes the review of documents that need to be submitted to complete the employee personnel file, receipt of the school catalog, policies manual, job descriptions and a campus tour.

HOURS OF WORK

The normal work schedule for all staff employees is eight hours a day, five days a week, excluding one hour lunch. The Chief On-site Administrator will advise the staff employees of the times their schedule will normally begin and end. Staffing needs and operational demands may necessitate variations in starting and ending times, as well as variations in the total hours that may be scheduled each day and week.

ATTENDANCE AND PUNCTUALITY

Every employee is expected to be conscientious about attendance and punctuality at work, be part of the team,

and getting work done well by deadlines and in the right place.

If for any reason the employee is to be late or absent from work, (s) he should personally contact the respective supervisor, no later than the normal starting time or before.

For absences that can be predicted, the employee should schedule an absence in advance with the immediate supervisor. For absences that cannot be predicted, such as absences due to illness, employees are required to report the absence to the immediate supervisor by the scheduled start time. Only under emergency circumstances should someone call in for the employee to report the absence.

Excessive absenteeism or tardiness can be grounds for counseling, warning, and terminations. Failure to personally notify the supervisor of the absence or tardiness may result in disciplinary action up to and including termination.

Three unauthorized absences within a year will serve as a violation of employment, resulting in dismissal. It is the employee's responsibility to give advance notice of the absence to the immediate supervisor.

MEETING ATTENDANCE

The employee is responsible for attending all institutional or departmental meetings called by any Nobel University's officer. In addition, from time to time the School will sponsor informational meetings regarding the institutions strategic directions, benefits, or programs provided by the School.

JOB ABANDONMENT

If the employee does not show up for work and does not talk directly with the Chief On-site Administrator for three working days, the employee may be considered to have abandoned her/his job. Any such incident will be evaluated in light of its individual circumstances.

MEALS AND REST BREAKS

All employees working more than five hours in any work day are provided with one meal period each workday. Meal periods will be a minimum of one (1) hour in length and employees will be relieved of all active responsibilities and restrictions during meal periods and will not be compensated for that time. The Chief On-site Administrator has the ability to schedule meal periods to accommodate operating requirements.

PERSONAL APPEARANCE

An employee of Nobel University is always expected to maintain a personal appearance appropriate to the work that (s) he performs. The image presented at the School should be one of moderation, neatness, and good taste. If the job requires a uniform, the employee is expected to wear it. Any question about appropriate dress, must be addressed with the Chief On-site Administrator.

PROFESSIONAL DEVELOPMENT

All administrators and faculty are expected to continuously develop further expertise in their areas of responsibility. An annual professional development plan is to be a part of each administrator's or faculty member's annual

evaluation. A budget for professional development is provided to assist administrators and faculty.

WORKING CONDITIONS

It is the policy of Nobel University to provide a safe and healthy work environment for its employees. If an unsafe or unhealthy work situation is identified or believed to exist, a report of the condition should be made immediately to the Chief On-site Administrator or to the immediate supervisor. The situation will be investigated and, where indicated, corrective action will be taken.

PERFORMANCE EVALUATION

It is important that the employee knows what is expected on the job. This is accomplished initially through the job description when the employee starts to work at the School. In addition to the initial three months introductory probation review, the new employee will be reviewed by the supervisor periodically.

Evaluations are based on job content and performance standards that have been established prior to the time the performance was evaluated by the supervisor.

In addition to formal performance evaluations, the School encourages you and your supervisor to discuss your job performance on an ongoing basis.

SALARIES AND BENEFITS

DETERMINANTS OF PAY

In determining the starting hourly rate of pay, careful attention is given to the individual's level of education, skills, and relevant experience.

COMPENSATION PROGRAM

There are three major objectives of the compensation program at Nobel University;

1. It is designed to recruit, retain, and promote the growth of highly qualified individuals.
2. This objective intends that the salary practices be internally equitable and competitively attractive, as influenced by external markets.
3. This School's program of employee compensation must be structured on economic reality and administered in a manner that ensures uniform and consistent opportunity and consideration for all employees.

PAYDAYS

The administrative employees are paid semimonthly on the 1st and the 16th day of each month. Faculty members are paid monthly on the 16th day of each month. Each paycheck will include earnings for all work performed through the end of the previous payroll period.

Whenever a regularly scheduled payday falls on a day off, such as a weekend or holiday, you receive pay on the next work day.

If a regular payday falls during vacation, you may receive your earned wages and vacation pay before departing for vacation by submitting a request at least two weeks prior to departing for vacation.

PROMOTION & TRANSFER

A promotion is defined as a job change, following the process of competitive recruitment to a position higher. An employee who is promoted will receive a ten (10) percent salary increase.

A transfer is defined as a job change to a position without change in salary. A transfer is sometimes referred to as a lateral job move. No introductory probation period is required.

PRIVACY OF PERSONNEL RECORDS

Personnel files are maintained on all Nobel University employees. This School respects the confidentiality of the employee's personal information and it is its intention to release information from their files only in accordance with these guidelines.

The employee's personal file is available for review upon request at the file room. Personnel files are kept in a lockable file cabinet and each personnel file contains tax information, educational background (official transcripts and diplomas) and other job-related information that falls into the following general categories:

1. Information that the employee included with the employment application and/or resume along with employment eligibility verification.
2. Information on job changes that the employee has made at the School, including job descriptions.
3. Medical information that has been provided, if any.
4. All job related letters and memos.
5. All required sign-offs, such as receipt of manuals and academic freedom policy.

PERSONAL RECORD CHANGES

Nobel University keeps records concerning your employment, so it is important that your personnel records are accurate and up to date. It is the employee's responsibility to inform the School of your personal record changes, such as your name, address or telephone number, marital status, number of dependents, or any changes in the person that you want the School to notify in case of emergency. Any necessary changes to the personal records should be reported to the Chief On-site Administrator.

EMPLOYMENT AT WILL

Employment at Nobel University shall be at will by the School. The employee can be dismissed with or without notice or cause. No representative of the School has any authority to enter into any agreement for any specified period of time or to make any agreement contrary to the foregoing. Any oral statements or promises to the contrary are not binding upon the School. Such statements should be confirmed with the President. The School shall not be responsible for any statements that are not confirmed in writing by the President.

CONFLICT OF INTEREST

The School expects that each employee will use good judgment, high ethical standards, and honesty in all business dealings with and on behalf of the School. The employee has a responsibility to avoid any conflict of interest or

appearance of conflict of interest.

SALES AND SOLICITATION

Nobel University strictly prohibits the solicitation of sales information and items not expressly sponsored by the School. There shall be no solicitation or sales of non-School sponsored items on school premises. Listings of School staff, faculty or students will not routinely or normally be provided to outside organizations, agencies or individuals.

RULES OF CONDUCT & DISCIPLINE

Nobel University encourages all the employees to make their immediate supervisor their first resource for any questions that they have related to their job duties, work assignments, job performance and/or policies and practices. This School's goals are to ensure that clearly stated policies and procedures will make resolution of issues increasingly possible at this level.

STANDARDS OF CONDUCT

Nobel University employees are expected to treat each other with dignity and respect and to abide by certain rules of conduct, based on honesty, good taste, fair play, and safety. Conduct that is immoral, unethical, or illegal will not be tolerated by the School. Although it is not possible to provide an exhaustive list of all types of impermissible conduct, the following are some, but not all examples of conduct that will lead to disciplinary action, up to and including termination:

1. Falsification of employment records, employment information or other school records.
2. Recording the work time of another employee or allowing any other employee to record your work time, or allowing falsification of any timecard, either your own or another employee's.
3. Theft, deliberate or careless damage or destruction of any school property or the property of any employee or students.
4. Unauthorized use or removal of the school or school property, equipment, time, materials, or facilities.
5. Provoking a fight or fighting during working hours or while on the school or school premises.
6. Participating in horseplay or practical jokes on the school time or while on the school or school premises.
7. Engaging in criminal conduct.
8. Carrying firearms or any other dangerous weapons while on the school or school premises at any time.
9. Causing, creating or participating in disruption of any kind during working hours on the school or school property.
10. Insubordination including, but not limited to, failure or refusal to obey the orders or instructions of a supervisor or member of management.
11. The use of abusive or threatening language toward a co-worker, supervisor, member of management, or students.
12. Failure to notify a supervisor when unable to report to work.
13. Unreported absence of three consecutive schedule workdays.
14. Failure to obtain permission to leave work for any reason during normal working hours.
15. Failure to observe working schedules.
16. Failure to provide a physician's verification when requested or required to do so.
17. Sleeping or malingering on the job.
18. Making or accepting excessive personal telephone calls during working hours, except in cases of emergency.
19. Unsatisfactory work performance or incompetence.
20. Working overtime without authorization or refusing to work assigned overtime.

21. Wearing unprofessional or inappropriate styles of dress or hair while working.
22. Committing a fraudulent act or a breach of trust under any circumstances.
23. Harassing other employees or students.
24. Soliciting or accepting gratuities from students, employees or other faculty members.
25. Excessive tardiness.
26. Abuse of leaves of absence or sick leave.
27. Reporting to work intoxicated or under the influence of non-prescribed drugs.
28. Manufacturing, possessing, using, selling, distributing or transporting non-prescribed drugs.
29. Bringing or using alcoholic beverages on the school premises.
30. Gambling on the school premises.
31. Failing to maintain the confidentiality of the school, its employees, and students.
32. Failing to report accidents, breakage, or damage to equipment which occurs when an employee is assigned to use such equipment.
33. Violation of any school or school policies, rules or procedures.
34. Failure to follow the school policies outlined in this manual or newly instituted.

DISCIPLINARY ACTION

Discipline may be initiated for various reasons. The severity of the action generally depends on the nature of the offense and the employee's past records and may range from written warnings to immediate dismissal. The school reserves the right to initiate the form of discipline it deems appropriate. This statement of prohibited conduct does not alter the school's policy of at-will employment. Both employee and the school remain free to terminate the employment relationship at any time, with or without reason or advance notice.

Any executive officers of the School are entrusted with the task of determining the disciplinary action. These actions include, but not limited to:

1. Verbal reprimand;
2. Written reprimand;
3. Dismissal

Verbal Reprimand

Normally, when the supervisor first identifies a discipline problem, the supervisor will privately counsel the employee and outline the steps necessary to correct the problem. The supervisor advises the employee that any further problem may result in further discipline. The supervisor summarizes the counseling session in writing. One copy is given to the employee and another copy is kept in the employee's personnel file.

If a problem occurs that is in a different category (i.e., (1) time and attendance, (2) performance, or (3) conduct) from the category covering the problem for which an employee has already been counseled but not warned, the supervisor should provide counseling regarding the new problem. This further counseling is not required when the employee already has two (2) active formal disciplines.

Written Warnings

A written warning may be issued when an employee has a problem in a category (i.e., (1) time and attendance, (2) performance, or (3) conduct) and the employee has been previously counseled for a problem in that category. Under certain circumstances the problem may be sufficiently serious that written warning may also be issued without prior counseling.

Dismissal

The President of the School may remove, at any time, an administrative staff member for cause upon written notification.

Any employee may be dismissed for any of the following reasons:

1. Conviction or admission of guilt of a felony or of any crime involving moral turpitude during the period of employment or prior thereto if the conviction or admission of guilt was willfully concealed.
2. Professional incompetence or neglect of duty.
3. Sale or distribution of illegal drugs, teaching under the influence of alcohol or known use of illegal drugs; any other use of alcohol or illegal drugs which interferes with administrative performance of duty or responsibilities to the School.
4. False swearing with respect to official documents filed with the School.
5. Disruption of any administrative, disciplinary, public service, or other authorized activity.
6. Immoral or absence conduct.
7. Willful violation of the School's policies and other published rules and policies; or demonstrated failure to support, or active opposition to the published mission, purpose, and goals of the School.

Procedures for Dismissal

Dismissal of an administrative staff member should be preceded by:

1. Discussion between an administrative staff member and appropriate executive officers looking toward a mutual settlement.
2. A statement of charges, framed with reasonable particulars.
3. If a contract is terminated for financial emergency reasons, it is not considered a dismissal, but a leave of absence with no pay, for no more than one year.

TERMINATION OF EMPLOYMENT

The reasons for separation from the School are too numerous to itemize, they can be summarized into two (2) main categories, namely resignation and discharge.

RESIGNATION (VOLUNTARY TERMINATION)

Resignation is a voluntary decision to leave the School. While all non-contracted employment is "at will" and the employees are free to leave the organization at any time, with or without notice or cause, it is requested that you notify the Chief Operating Officer of your resignation minimum of two (2) weeks in advance. Due to the nature of exempt level work and the time required to find a replacement, if you hold a position at or above the supervisory level, you are requested to give sixty (60) to ninety (90) days notice.

All resignations should be in writing; however, a verbal resignation is also valid and may be accepted by the institution. The employee may not retract a resignation once it is given.

Once a resignation is given and accepted by the institution, there is no guarantee that the employee will work through the entire resignation period. Nobel University reserves the right, at its sole discretion, to end your employment at any time during your notice of resignation. Should this happen, your final pay will be determined and paid within two (2) weeks from the date of resignation.

DISMISSAL (INVOLUNTARY TERMINATION)

A dismissal is when you are involuntarily removed from your employment relationship with Nobel University. In this event, your final pay will be determined and paid within seventy-two (72) hours from the date of dismissal.

EXIT INTERVIEW

Regardless of the reason(s) you are leaving the institution, you must have a face-to-face exit interview with the Chief On-site Administrator. The Policies manual, employee I.D. card, keys, health plan cards and other School property must be returned at this time.

BENEFITS

All full-time employees are covered by Social Security, workers' compensation, state disability and unemployment insurance. Nobel University provides a range of other benefits to eligible employees. More information on employee benefits can be obtained from the Office of the Chief Operating Officer.

HOLIDAYS

Nobel University observes the same holidays as the federal holidays. To qualify for holiday pay, eligible employees must be employed and on paid status with the School on the date that the holiday is observed, per the School's academic calendar. Paid status is defined as performing work or taking paid leave any time during the pay period.

The following days are observed as holidays, although they may be observed on a different date, per the School's academic calendar: New Year's Day; Martin Luther King Jr.'s Birthday; Presidents Day; Memorial Day; Independence Day; Labor Day; Indigenous People's Day; Veterans' Day; Thanksgiving Day; Christmas; and other days designated as federal holidays.

To receive holiday pay, employees in benefited positions must be regularly scheduled to work on the day on which the holiday is observed and must work their regularly scheduled work days immediately preceding and immediately following the holiday, unless a paid leave of absence on either day is approved in advance by the supervisor. If you are ill on the workday before or after the holiday, a doctor's note will be necessary to be paid for the holiday.

Some situations may arise whereby it will be necessary for an employee to work on a scheduled holiday. Prior approval from your supervisor must be obtained before any employee works on a scheduled holiday. If a non-exempt employee is approved to work on a scheduled holiday and is eligible for holiday pay, the employee is to be compensated for both the holiday and the actual hours of work at the employee's regular rate of pay.

VACATION

Vacation benefits begin to accrue for eligible employees immediately upon commencement of employment with Nobel University. Only full-time employees are entitled to paid vacation for five (5) working days after having worked for one entire calendar year on a full-time basis.

Employees will resume accruing vacation once they have used some of their accrued but unused vacation. All accrued but unused vacation benefits are paid at the time of separation of employment.

Employees must provide their supervisor with as much advance notice of anticipated vacations as possible so that assigned work may be adequately staffed. In some instances, it may be necessary for an employee to change vacation schedule due to scheduling conflicts, deadlines, and other business needs. The School reserves the right to approve or to deny vacation at any time during which the absence of the employee would adversely affect business operations.

TUITION BENEFIT FOR EMPLOYEES

Only full-time employees are eligible immediately upon hire to receive free tuition for coursework at Nobel University, subject to the following conditions:

1. Employees are not allowed to be enrolled in those courses offered during the employee's normal work schedule.
2. Employees must be given authorization from the Chief Operating Officer, prior to enrollment in any class or program.
3. Employees must submit required admission documents according to the School's admissions policies.
4. Employees are admitted into a course on a space-available basis. If a course becomes oversubscribed, preference will be given to students.
5. If an employee transfers to part-time employment or leaves Nobel University employment before the course is completed, the employee may be required to reimburse the cost of the course. Future courses will not fall under the tuition benefit plan unless the employee returns to a full-time status.

LEAVES OF ABSENCE

Nobel University will consider requests for leave of absence, without pay, from full- and part-time staff members employed for more than six months. Employees should notify your supervisor and/or the Chief On-site Administrator in writing as soon as you become aware that you may need a leave of absence. Employees must not accept other employment while they are on a leave of absence. Acceptance of other employment while on leave will be treated as a voluntary resignation from employment at Nobel University. Employees should understand that they have no greater right to a leave of absence, reinstatement upon returning from a leave of absence, or other benefits of employment than if they had continued to work during their leave. Requesting or receiving a leave of absence in no way relieves employees of their obligation while on the job to perform their job responsibilities capably and to observe all of the School's policies, rules, and procedures. Employee benefits will remain in effect except on an educational leave of absence.

HEALTHY WORKPLACE HEALTHY FAMILY ACT OF 2014

An employee who, on or after July 1, 2015, works in California for 30 or more days within a year from the beginning of employment, is entitled to paid sick leave. Employees, including part-time and temporary employees, will earn at least one hour of paid leave for every 30 hours worked. Accrual begins on the first day of employment or July 1, 2015, whichever is later.

Exceptions: Employees covered by qualifying collective bargaining agreements, In-Home Supportive Services providers, and certain employees of air carriers are not covered by this law.

An employer may limit the amount of paid sick leave an employee can use in one year to 24 hours or three days. Accrued paid sick leave may be carried over to the next year, but it may be capped at 48 hours or six days.

USAGE

- An employee may use accrued paid sick days beginning on the 90th day of employment.
- An employee may request paid sick days in writing or verbally. An employee cannot be required to find a replacement as a condition for using paid sick days.
- An employee can take paid leave for employee's own or a family member for the diagnosis, care or treatment of an existing health condition or preventive care or for specified purposes for an employee who is a victim of domestic violence, sexual assault or stalking.

SICK LEAVES

Nobel University provides employees in benefited positions sick pay benefits for the illness or injury of the employee, or to care for the employee's spouse, domestic partner, parent, or children. Time off for medical and dental appointments will also be treated as sick leave. Employees should be careful not to abuse or misuse the sick leave privilege.

The following schedule details payments which will be made to full-time employees.

1. All full-time employees will be eligible for up to one-half (1/2) day's paid-sick-leave per month. An employee may not use more sick time than has been accrued, and may not receive an advance of sick time that has not yet been accrued.

2. All full-time employees who have worked at least a year will be eligible for wage continuation during period of illness, not exceeding four days per year.
3. Eligible employees who are regularly scheduled to work less than 40 hours per week shall accrue sick pay on a pro-rata basis.

Employees may be required to provide a physician's statement or other appropriate medical certification when absent for three or more consecutive days due to illness or if suspected of abusing sick leave.

FAMILY MEDICAL LEAVE ACT

Under the federal Family and Medical Leave Act ("FMLA") and the California Family Rights Act ("CFRA"), eligible employees are entitled to take medical leave and family care leave up to a combined total of 12 weeks in any 12-month period.

ELIGIBLE EMPLOYEES

To qualify for a medical leave or family care leave, an employee must have worked for Nobel University for at least 12 months and must have provided at least 1,250 hours of service during the 12-month period prior to beginning each leave.

REASONS FOR LEAVE

Eligible employees may take medical leave or family care leave for the following reasons:

1. The birth of a child or the placement of a child with the employee for adoption or foster care;
2. To care for a spouse, domestic partner, child, or parent who has a serious health condition; or
3. The employee's own serious health condition if the employee is unable to perform the essential functions of his or her job.

A "serious health condition" means an illness, injury, impairment, or physical or mental condition that involves: (1) inpatient care in a hospital, hospice or residential health care facility; or (2) continuing treatment or continuing supervision by a health care provider that also requires an absence from work, school or other regular daily activities of more than three days.

DURATION OF LEAVE

Eligible employees are entitled to take family care and medical leave of absence up to a combined total of 12 weeks in a rolling 12-month period, which is measured backward from the date the leave is taken. Leave for the birth, adoption or foster placement of a child must conclude within one calendar year of the actual birth, adoption or placement. If both parents work for NU, the parents' combined leave for the birth or placement of a child may not exceed 12 weeks during any 12-month period.

An eligible employee may take intermittent leave or may work a reduced work schedule for a serious health condition of the employee's child, parent, spouse or of the employee when medically necessary and if certified by a health care provider. If the need for the leave or intermittent leave is foreseeable, the employee should consult with Nobel University and make a reasonable effort to schedule any planned treatment in cooperation with the School, if possible, in order to minimize disruption to the workplace.

BENEFITS DURING LEAVE

Family care and medical leaves are unpaid. Group health insurance coverage will continue for eligible employees taking family care or medical leave under this policy under the same terms and conditions that applied before the

leave commenced. To continue health insurance coverage, the employee must continue to make any premium contributions that he or she was required to make prior to taking leave. Premium payments are due monthly and should be made payable to Nobel University and delivered to the Chief Operating Officer. If an employee fails to pay his or her portion within 30 days of the due date of a premium, his or her health insurance coverage may be canceled. In such cases, employees will be notified at least 15 days before coverage terminates.

Employees on family care or medical leave do not accrue benefits including holiday pay, while on unpaid leave. Employees will not accrue vacation and sick pay while on unpaid leave. Vacation and sick pay will begin accruing when the employee returns to work.

NOTICE REQUIREMENTS

Employees who need to take family care or medical leave should contact the Chief On-site Administrator as soon as they learn of the need for leave, even when they do not know the precise dates that leave will begin. If leave is foreseeable, at least 30 days' notice is required. For events that are not foreseeable 30 days in advance, but are not emergencies, the employee must give notice within two working days of learning of the need for the leave. If the School determines that the notice was inadequate and that the employee knew of the need for leave in advance of the request, the School may require the employee to delay his or her leave. If circumstances of the leave change and the employee is able to return to work earlier than indicated, the employee is required to notify the Chief On-site Administrator at least two working days prior to the date he/she intends to return to work. Similarly, if an employee learns he/she will be unable to return to work on the date previously indicated, the employee is responsible for applying for an extension and furnishing a medical recertification for an extension prior to the date that the leave expires.

MEDICAL CERTIFICATION

An employee taking leave for the serious health condition of a family member or for his or her own serious health condition must provide the Chief On-site Administrator with certification from a health care provider within 15 calendar days of the School's request. Failure to provide a satisfactory medical certification may result in denial of leave.

If an employee requests an extension of leave beyond the time estimated by the health care provider, the School will require recertification of the employee's or the family member's serious health condition.

OUTSIDE EMPLOYMENT

Employees must not be employed with any employer other than Nobel University during their leave of absence. Outside employment during their leave may result in immediate termination.

REINSTATEMENT

When an employee is able to return to work, he or she should give the School at least two weeks notice. This is important so that the employee's return to work is properly scheduled.

Under most circumstances, the School will reinstate employees to their former or equivalent position if they return from leave within 12 weeks. Exceptions, however, may occur as permitted by law.

Employees who do not return to work immediately upon the expiration of an approved leave of absence or within the maximum period allowed for the family and medical leave will be considered to have voluntarily terminated from the School.

OTHER INFORMATION

The policies and guidelines stated in this policy shall be subject to such other terms and conditions as are provided in the Family and Medical Leave Act of 1993 and applicable California leave laws. The FMLA and CFRA make it unlawful for any employer to interfere with, restrain, or deny the exercise of any right provided under FMLA or CFRA; or to discharge or discriminate against any person for opposing any practice made unlawful by FMLA or CFRA, or for involvement in any proceeding under or relating to the FMLA. An employee may file a complaint with the U.S. Department of Labor or may bring a private lawsuit against an employer. FMLA does not affect any federal or state law prohibiting discrimination, or supersede any state or local law that provides greater family or medical leave rights. If you have questions about the exercise of FMLA rights, please contact the Chief Operating Officer.

PREGNANCY DISABILITY LEAVE

DURATION OF LEAVE

Full-time employees are eligible for paid leave of absence for their own disability caused by pregnancy, childbirth or related medical conditions of up to one week, in addition to an unpaid leave of up to five weeks, for the birth or adoption of a child. Part-time employees who work an average of twenty (20) hours per week and who have been employed for twelve (12) months are eligible for an unpaid pregnancy-related disability leave of up to four (4) months for the birth or adoption of a child. Leave can be taken before or after birth during any period of time the woman is physically unable to work because of pregnancy or a pregnancy-related condition. All leave taken in connection with a specific pregnancy counts toward computing the four-month period.

At the end of the employee's period of pregnancy disability (not to exceed four months), employees who are also eligible for family care and medical leave, as described above, may take family care and medical leave up to 12 weeks for birth of the child. The maximum possible combined leave for both family care and medical leave and pregnancy disability leave for birth of a child is four months and 12 weeks. This assumes that the employee is disabled by childbirth or related medical conditions for four months and then requests and is eligible for a 12-week family leave for the birth of the child. Pregnancy-related disability leave is counted towards an employee's FMLA entitlement.

TRANSFER AND ACCOMMODATION

An employee is entitled to a temporary transfer to another position or other reasonable accommodation based on a pregnancy-related disability so long as (1) the employee requests the transfer or reasonable accommodation and the request is based on the medical certification of a health care provider that a transfer or reasonable accommodation is medically advisable, and (2) the request can be reasonably accommodated by NU. Employees who are transferred to accommodate a pregnancy-related disability possess the same reinstatement and other rights described below with respect to pregnancy-related disability leaves.

BENEFITS DURING LEAVE

Pregnancy-related disability leaves are unpaid. Employees on a pregnancy-related disability leave do not accrue benefits, including holiday pay, while on unpaid leave. Employees will not accrue vacation and sick pay while on unpaid leave. Vacation and sick pay will begin accruing when the employee returns to work.

MEDICAL CERTIFICATION

An employee requesting pregnancy-related disability leave must provide medical certification that she is disabled by pregnancy, similar to that required for family care and medical leaves of absence, as described above. An

employee taking a pregnancy-related disability leave must present a fitness for duty certification before returning to work.

NOTICE

Employees should contact their supervisor as soon as they learn that they will need a pregnancy-related disability leave, even if they do not know the precise date that such leave will begin. Employees must provide at least 30 days' notice when the need for pregnancy-related disability leave is foreseeable. If the need for leave is not foreseeable, notice must be given to the Chief Operating Officer within two business days of learning of the need for the leave. Employees must indicate the estimated timing and duration of the leave and make a reasonable effort to schedule any planned medical treatment so as to minimize disruption to the School activities.

If an employee requests an extension of leave beyond the time estimated by the health care provider, the employee must submit a recertification prior to the expiration date.

OUTSIDE EMPLOYMENT

Employees must not be employed with any employer other than the School during their leave of absence. Outside employment during their leave may result in immediate termination.

REINSTATEMENT

When an employee is able to return to work from pregnancy disability leave, she should give the School at least two (2) weeks notice so that her return to work is properly scheduled. If the employee desires to return earlier than agreed, an employer must reinstate employee within two business days of notice.

Under most circumstances, the School will reinstate employees to their former or equivalent position if they return from leave within 4 months. Exceptions, however, may occur as permitted by law. Employees should understand that they have no greater right to reinstatement or to other benefits of employment than if they had continued to work during their leave.

BEREAVEMENT LEAVE

In the event of death in the immediate family, full-time and part-time employees will be permitted a bereavement leave of up to five (5) working days off with pay. 'Immediate family' means spouse, domestic partner, mother, father, mother-in-law, father-in-law, domestic partner's parents, grandfather, grandmother, grandchild, sister, brother, and children. All other employees are not eligible for paid bereavement leave, although they may request the leave on an unpaid basis.

PERSONAL LEAVE OF ABSENCE

With the permission of the immediate supervisor, personal leave time is available for those occasions when the employee must take a block of time off from work for business or personal reasons without using earned vacation for other than its intended purpose.

A maximum of twenty-four (24) hours, not consecutive, for not less than two (2) hours per time, will be allowed in a year of employment.

Requests for a personal leave of absence must be presented in writing to the Chief On-site Administrator at least

30 days in advance, whenever possible. Requests will be considered on the basis of staffing requirements, the reasons for the leave, and performance and attendance record.

Employees on a personal leave of absence do not accrue benefits, including holiday pay. Vacation and sick pay will begin accruing when the employee returns to work. The School will not pay insurance premiums while an employee is on a personal leave of absence. To maintain insurance coverage while on a personal leave of absence, employees have the option of paying the monthly insurance premiums.

Employees should notify the Chief Operating Officer when they are ready to return to work at least two (2) weeks before the expiration of your leave. The Chief On-site Administrator will notify you if an opening exists. The School cannot guarantee reemployment to employees returning from a personal leave of absence.

The following will be deemed a voluntary resignation while you are on a personal leave of absence:

1. Failure to advise the School of your availability to work;
2. Application for unemployment benefits;
3. Obtaining another position;
4. Engaging in another business;
5. Failure to return to work when notified; or
6. Continued absence from work beyond the time approved by the School.

JURY & COURT DUTY

It is Nobel University's policy to enable its employees to fulfill their civic obligations. If called for jury or court duty, notify the supervisor immediately and submit notice no later than ten days before starting jury or court duty. Employees in benefited positions who serve jury duty shall receive their regular salary for up to ten (10) days every twenty-four (24) months, only if they remit the amount received for jury duty to the School. If the employee elects to retain the jury duty fees or witness fees, his/her time off for jury or court duty is not compensable. The employee may elect to use vacation time to cover the time off. Employees should continue to report for work on those days or parts of days when excused from jury or court duty or when jury or court duty does not conflict with his/her work. Employees who are not eligible for pay benefits under this policy may serve jury duty on an unpaid basis.

VOTING TIME OFF

Employees who are unable to vote during non-work hours may arrange in advance to take up to two hours off from work with pay to vote in a public election. These two hours must be taken at either the beginning or the end of the workday. In order to qualify, you must obtain approval from your supervisor at least two working days in advance

CRIME VICTIM LEAVE

An employee who is a victim or who is an immediate family member of a victim of a felony may take unpaid time off from work in order to attend judicial proceedings related to the crime. Any absence from work to attend judicial proceedings will be unpaid, unless you choose to take accrued vacation or personal holiday.

Before you are absent for such a reason, you must provide documentation of police report and the scheduled proceeding. Such notice is typically given to the victim of the crime by a court or government agency setting the hearing, a district attorney or prosecuting attorney's office or a victim/witness office. If advance notice is not

possible, you must provide appropriate documentation within a reasonable time after the absence.

TIME OFF FOR VICTIMS OF DOMESTIC VIOLENCE

Nobel University permits employees who become victims of domestic violence to take time off to obtain a restraining order, medical treatment, psychological counseling, assistance from a shelter or similar organization, or to obtain relief to help ensure the health, safety or welfare of the employee or of the employee's child, including time off to participate in safety planning. The School will maintain the confidentiality of any employee requesting time off under this policy. Employees may use their unused vacation or sick pay when taking time off due to domestic violence; otherwise the time off will be unpaid.

Employees who take time off under this policy must provide the School with advance notice of the need to take time off, including the date and length of time off that is required. Advance notice may not be required if it is not feasible. Employees who are able to provide advance notice should consult their supervisor and schedule their time off to minimize the impact of their absence on the School's operation.

Additionally, the School requires certification of time off due to domestic violence. Certification may be in the form of a police report, court order, or official documentation from a medical professional, counselor, or social services advocate. Failure to provide the required certification may result in a denial of the requested time off. The length of unpaid leave an employee may take under this policy is limited to twelve (12) weeks.

To ensure the safety of all NU employees, employees who obtain restraining orders as the result of domestic violence should provide a copy of the restraining order to the Chief Operating Officer, as well as a photograph and a description of the individual who is being restrained.

EDUCATIONAL LEAVES

An education leave may also be granted for education where Nobel University will derive direct or indirect benefit upon your return to work, and for exceptional reasons. During a period of education leave, all employees' privileges will terminate for the period of the leave of absence. At the time of return, the employee can be re-incorporated to the same or comparable position in his/her department at the same rate of pay.

SECURITY & SAFETY

All members of the School are expected to cooperate in securing Nobel University property by locking doors and windows, and by reporting broken windows or suspicious persons. If any of these actions are found, they are to be reported immediately to the School employees. Nobel University is not responsible for personal items that might be damaged or lost on or about the premises. Nobel University intends to provide a safe working environment with everyone's assistance. All members of the School need to observe safety regulations, wear safety equipment, if required, and report immediately any unsafe conditions or work procedures to the School employees.

In case of emergency, all students, faculty, and staff must immediately evacuate the building. First aid is available at the front desk of each campus. The School also provides insurance through an insurance company that covers liability throughout the facilities for bodily injury and property loss related to classroom activities.

In the event of a fire or medical emergency, notify any School employees and call 911 for immediate assistance.

JOB RELATED INJURIES AND ACCIDENTS

Notify the Chief On-site Administrator or immediate supervisor immediately in the event of an on-the-job injury, accident or serious illness. The Business Administrator will complete an accident report. The affected employee's supervisor must complete the report and submit it to the President. If the injured employee requires medical attention, contact the President or the Chief On-site Administrator before seeking medical care, except in cases of extreme emergency or when the President or the Chief On-site Administrator cannot be reached immediately.

DRUG, ALCOHOL AND SMOKING POLICIES

Nobel University has a policy of maintaining a drug-free learning environment. All members of the School community, who include administration, faculty, staff students, and guests, abstain from the consumption/use of alcohol, narcotics, and/or misuse of prescription drugs while on School property and on any field trip sponsored as part of the instructional program. Violation of this policy could lead to suspension, expulsion, termination, and in the context of criminal activity, referral to law enforcement agencies. Employees and students having difficulties with addictive substances can seek confidential counseling from the Office of Student Services for referrals to agencies providing assistance with alcohol or drug related problems. It is the School policy that smoking is prohibited in all School buildings. At the discretion of the administration, outside areas may be set aside on School property to accommodate students, staff members, and faculty who smoke. Violation of the smoking policy may result in suspension or termination of academic status or employment.

WEAPONS POLICY

The possession or use of firearms or other weapons on Nobel University premises by any employee, student, vendor, or other visitor is strictly prohibited. Any exception to this policy must be authorized in advance by the Chief Executive Officer/President.

SAFETY POLICY

All members of the School are expected to cooperate in securing Nobel University property by locking doors and windows, and by reporting broken windows or suspicious persons. If any of these actions are found, they are to be

reported immediately to the School employees. Nobel University is not responsible for personal items that might be damaged or lost on or about the premises. Nobel University intends to provide a safe working environment with everyone's assistance. All members of the School need to observe safety regulations, wear safety equipment, if required, and report immediately any unsafe conditions or work procedures to the School employees.

In case of emergency, all students, faculty, and staff must immediately evacuate the building. First aid is available at the front desk of each campus. The School also provides insurance through an insurance company that covers liability throughout the facilities for bodily injury and property loss related to classroom activities.

In the event of a fire or medical emergency, notify any School employees and call 911 for immediate assistance.

SECURITY INSPECTION & PRIVACY

Nobel University respects the privacy of the staff and faculty; however, the staff and faculty should not have an expectation of privacy when it comes to the School property, including but not limited to desks, closets, cabinets, files, computer equipment, voice mail, e-mail, all forms of electronic media, or any other type of School-owned property. To ensure the safety of all employees, the School reserves the right to inspect all School-owned property at any time, with or without notice, with or without cause.

The Staff and faculty should be aware that internet (web site) usage, e-mails, and voice mail are routinely monitored and/or stored for data retrieval purposes. Therefore, they are expressly not considered private. For more information on this issue please see the policy statements under "*computer, phone, internet, & e-mail systems.*"

COMPUTER, PHONE, INTERNET, & E-MAIL SYSTEMS

Nobel University considers itself to be the owner/licensed operator of all computer-related equipment, software, and computer files used in the operation of institutional business. Computers, computer files, the e-mail system, software, communication devices, and work task assistance devices/systems are furnished in order to aid in the completion of daily business related tasks. Computer files and e-mail are not a private form of communication and the staff and faculty should have no expectation of privacy for any information, messages, etc., created with, received by or left remaining on the system. Computer files and electronic messages of any kind are considered to be business property and to contain vital business information. Nobel University reserves the right to backup, audit files, inspect equipment, monitor and/or retrieve files, information, messages, and etc., at any time, for any reason, and without the necessity of giving the staff and faculty notification. The School understands there may be occasions where the staff and faculty will need to use these services for personal use. This usage needs to be kept to a minimum and should only be done during break time.

The staff and faculty may be issued various passwords for accessing different computer systems and/or files. All passwords are confidential and must not be given to any other person unless being authorized to do so. The staff and faculty must not use or possess any other Nobel University passwords other than the one(s) they have been specifically authorized to use. The staff and faculty should not use a password, access a file, or retrieve any stored communication without authorization. To ensure compliance, computer, voice mail, and e-mail usage may be monitored.

Nobel University strives to be sensitive to the diversity of its employees and to maintain a workplace free of harassment. Therefore, the School prohibits the use of computers and other business systems in ways that are disruptive, offensive to others, or harmful to morale. For example, the display or transmission of sexually explicit images, messages, and cartoons is not allowed. Other such misuse includes, but is not limited to, ethnic slurs,

racial comments, off-color jokes, or anything that may be construed as harassment or showing disrespect for others.

Nobel University purchases and licenses the use of various computer software for business purposes and does not own the copyright to this software or its related documentation. Unless authorized by the software developer, Nobel University does not have the right to reproduce such software for use on more than one computer.

The staff and faculty may only use software on local area networks or on multiple machines according to the software license agreement. Nobel University prohibits the illegal duplication of software and its related documentation.

If you violate this policy or have knowledge of others violating this policy and fail to report those violations, you will be subject to corrective action. Based upon the severity of the issue(s) under consideration, corrective action may range from reproachful warnings or counseling, to performance improvement plans, to termination of employment.

DISCLAIMER

This manual is intended to be a description of the school policies and procedures, personnel guidelines, other information and in effect from July 1, 2024 to June 30, 2025. It should not be construed as an irrevocable contract between the school employees and the Nobel University. The policies, procedures and fees listed here are subject to change with appropriate notification.